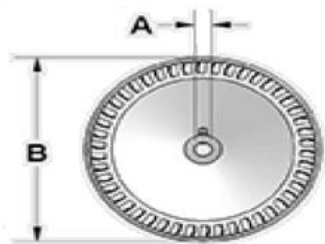
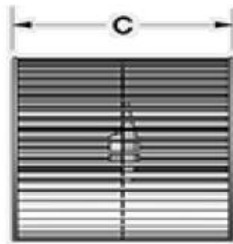


207 Duct Blower - Part # 9020101 / 9020106

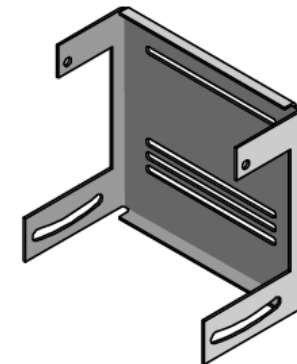
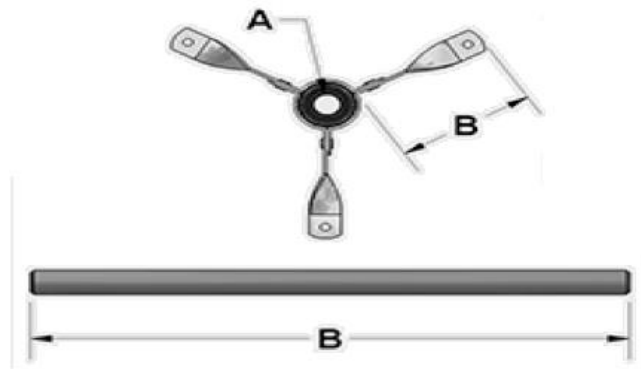
Part Number	Description	Qty Required	Dimensions			
			A	B	C	D
R-6030001	Wheel, G7BD-36-3/4-RH-LCD	1	3/4"	8-1/16"	7-3/16"	N/A
R-2100241	Shaft, 3/4 X 14-3/16, 2KWY	1	3/4"	14-3/16"	N/A	2 KwY
R-B-6080001	Bearing Bracket Assembly, G7 B/B (c/w bearing and sleeve)	2	3/4"	3-3/8"	N/A	N/A
R-B-8100000	Ball Bearing, 3/4 Complete with Rubber Sleeve	2	3/4"	N/A	N/A	N/A
R-B-3000004	207 DOOR	2	N/A	N/A	N/A	N/A
R-B-3180038	207 Motor Platform	1	N/A	N/A	N/A	N/A
R-B-7010033	Parts Bag, 200 SERIES	1	N/A	N/A	N/A	N/A
R-B-8860014	Rubber Grommets (#19)	4	N/A	N/A <td N/A	N/A	



Wheel



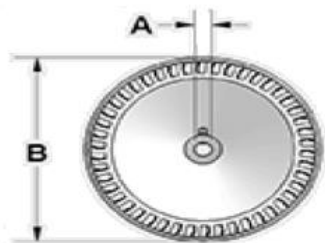
Bearing, Bearing Bracket and Shaft



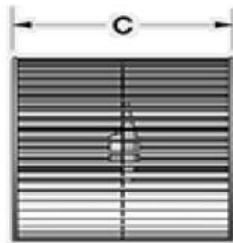
Motor Mount Platform

207-2 Duct Blower - Part # 9020116

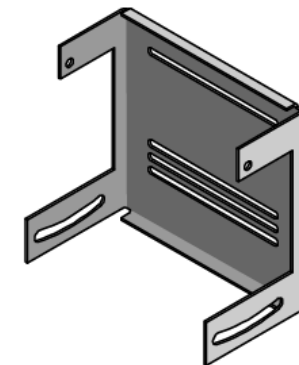
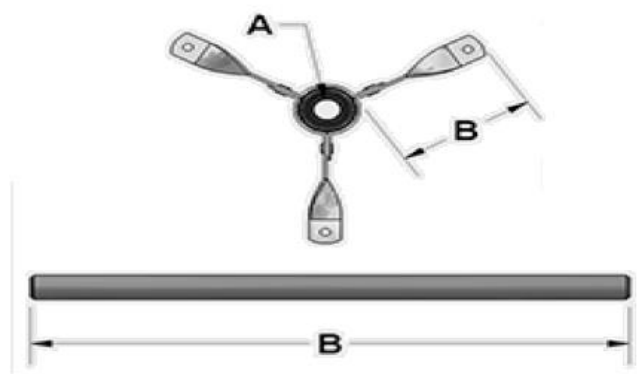
Part Number	Description	Qty Required	Dimensions			
			A	B	C	D
R-6030001	Wheel, G7BD-36-3/4-RH-LCD	2	3/4"	8-1/16"	7-3/16"	N/A
R-2100421	Shaft, 3/4 X 32-11/16", 2KWY	1	3/4"	32-11/16"	N/A	2 KwY
R-B-6080001	Bearing Bracket Assembly, G7 B/B (c/w bearing and sleeve)	3	3/4"	3-3/8"	N/A	N/A
R-B-8100000	Ball Bearing, 3/4 Complete with Rubber Sleeve	3	3/4"	N/A	N/A	N/A
R-B-3000004	207 DOOR	2	N/A	N/A	N/A	N/A
R-B-3180038	207 Motor Platform	1	N/A	N/A	N/A	N/A
R-B-7010033	Parts Bag, 200 SERIES	1	N/A	N/A	N/A	N/A
R-B-8860014	Rubber Grommets (#19)	8	N/A	N/A	N/A	N/A



Wheel



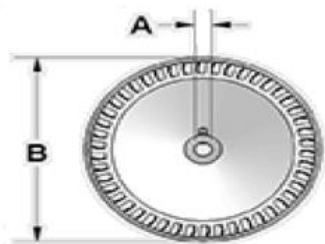
Bearing, Bearing Bracket and Shaft



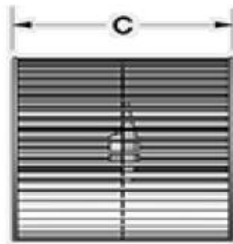
Motor Mount Platform

209 Duct Blower - Part# 9020102 / 9020107

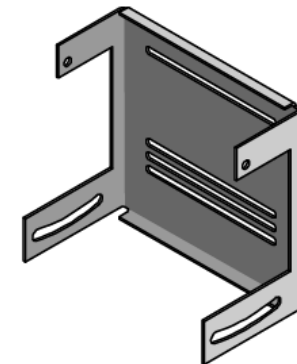
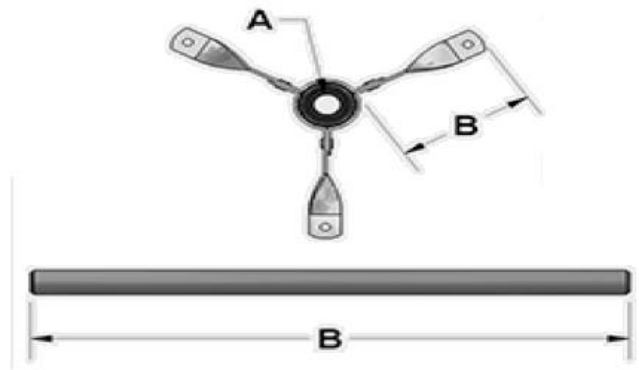
Part Number	Description	Qty Required	Dimensions			
			A	B	C	D
R-6030003	Wheel, G9BD-46-3/4-RH-LCD	1	3/4"	10-1/4"	9-9/16"	N/A
R-2100391	Shaft, 3/4 X 16-5/16, 2KWY	1	3/4"	16-5/16"	N/A	2 Kwy
R-B-6080002	Bearing Bracket Assembly, G9 B/B (c/w bearing and sleeve)	2	3/4"	4-9/16"	N/A	N/A
R-B-8100000	Ball Bearing, 3/4 Complete with Rubber Sleeve	2	3/4"	N/A	N/A	N/A
R-B-3000010	209 DOOR	2	N/A	N/A	N/A	N/A
R-B-3180039	209 Motor Platform	1	N/A	N/A	N/A	N/A
R-B-7010033	Parts Bag, 200 SERIES	1	N/A	N/A	N/A	N/A
R-B-8860014	Rubber Grommets (#19)	4	N/A	N/A	N/A	N/A



Wheel



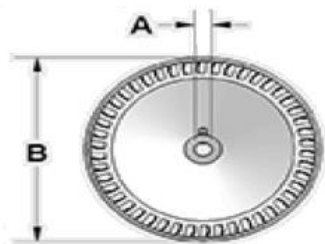
Bearing, Bearing Bracket and Shaft



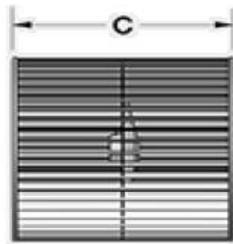
Motor Mount Platform

209-2 Duct Blower - Part# 9020117

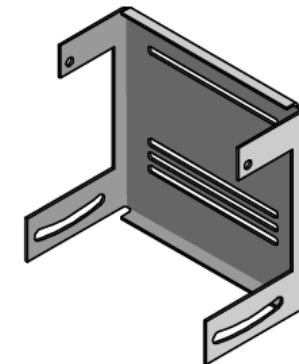
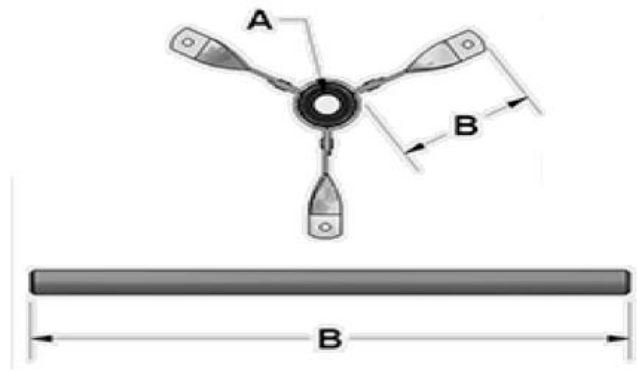
Part Number	Description	Qty Required	Dimensions			
			A	B	C	D
R-6030003	Wheel, G9BD-46-3/4-RH-LCD	2	3/4"	10-1/4"	9-9/16"	N/A
R-2100391	Shaft, 3/4 X 38-5/16, 2KWY	1	3/4"	38-5/16"	N/A	2 KwY
R-B-6080002	Bearing Bracket Assembly, G9 B/B (c/w bearing and sleeve)	3	3/4"	4-9/16"	N/A	N/A
R-B-8100000	Ball Bearing, 3/4 Complete with Rubber Sleeve	3	3/4"	N/A	N/A	N/A
R-B-3000010	209 DOOR	2	N/A	N/A	N/A	N/A
R-B-3180039	209 Motor Platform	1	N/A	N/A	N/A	N/A
R-B-7010033	Parts Bag, 200 SERIES	1	N/A	N/A	N/A	N/A
R-B-8860014	Rubber Grommets (#19)	8	N/A	N/A	N/A	N/A



Wheel



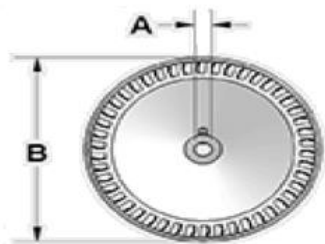
Bearing, Bearing Bracket and Shaft



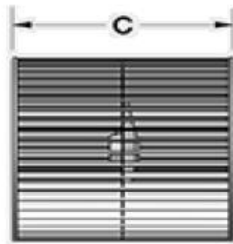
Motor Mount Platform

210 Duct Blower - Part# 9020103 / 9020108

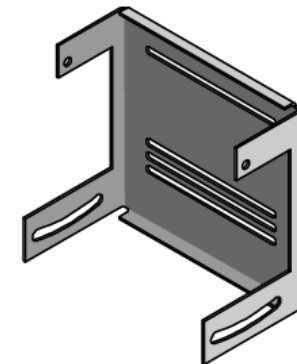
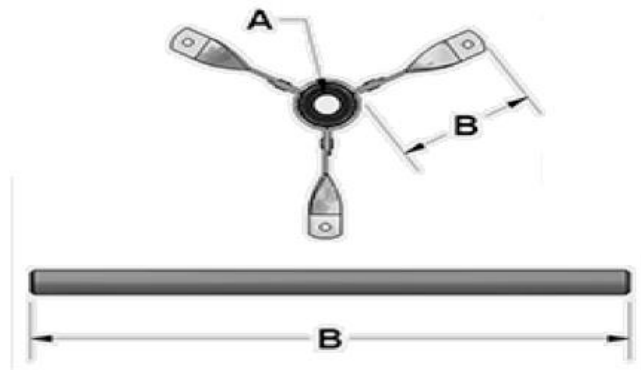
Part Number	Description	Qty Required	Dimensions			
			A	B	C	D
R-6030007	Wheel, G10BD-52-3/4-RH-LCD	1	3/4"	11-9/16"	10-13/16"	N/A
R-2100392	Shaft, 3/4 X 17-5/8, 2KWY	1	3/4"	17-5/8"	N/A	2 KwY
R-B-6080003	Bearing Bracket Assembly, G10 B/B (c/w bearing and sleeve)	2	3/4"	5-7/16"	N/A	N/A
R-B-8100000	Ball Bearing, 3/4 Complete with Rubber Sleeve	2	3/4"	N/A	N/A	N/A
R-B-3000016	210 DOOR	2	N/A	N/A	N/A	N/A
R-B-3180040	210 Motor Platform	1	N/A	N/A	N/A	N/A
R-B-7010033	Parts Bag, 200 SERIES	1	N/A	N/A	N/A	N/A
R-B-8860014	Rubber Grommets (#19)	4	N/A	N/A	N/A	N/A



Wheel



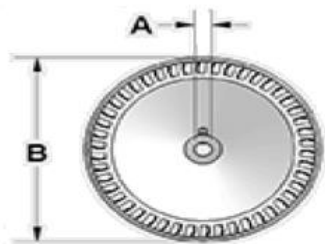
Bearing, Bearing Bracket and Shaft



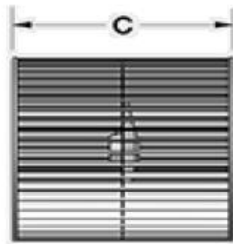
Motor Mount Platform

210-2 Duct Blower - Part# 9020118

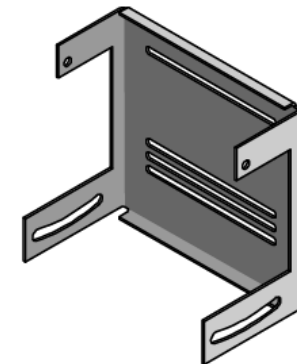
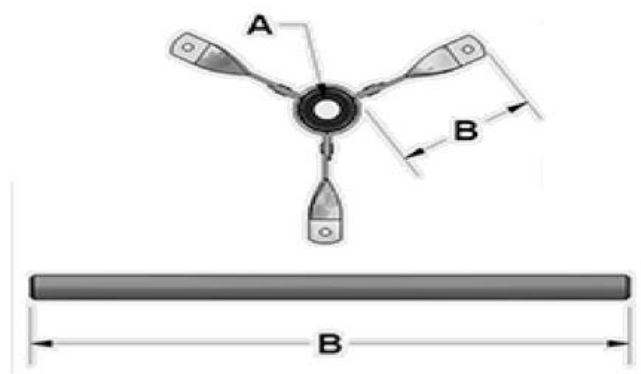
Part Number	Description	Qty Required	Dimensions			
			A	B	C	D
R-6030007	Wheel, G10BD-52-3/4-RH-LCD	2	3/4"	11-9/16"	10-13/16"	N/A
R-2100392	Shaft, 3/4 X 40-7/8, 2KWY	1	3/4"	40-7/8"	N/A	2 KwY
R-B-6080003	Bearing Bracket Assembly, G10 B/B (c/w bearing and sleeve)	3	3/4"	5-7/16"	N/A	N/A
R-B-8100000	Ball Bearing, 3/4 Complete with Rubber Sleeve	3	3/4"	N/A	N/A	N/A
R-B-3000016	210 DOOR	2	N/A	N/A	N/A	N/A
R-B-3180040	210 Motor Platform	1	N/A	N/A	N/A	N/A
R-B-7010033	Parts Bag, 200 SERIES	1	N/A	N/A	N/A	N/A
R-B-8860014	Rubber Grommets (#19)	8	N/A	N/A	N/A	N/A



Wheel



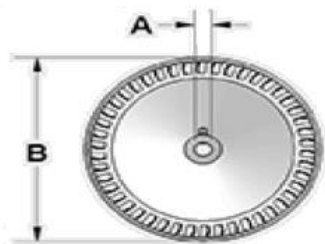
Bearing, Bearing Bracket and Shaft



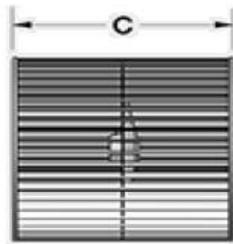
Motor Mount Platform

212 Duct Blower - Part# 9020104 / 9020109

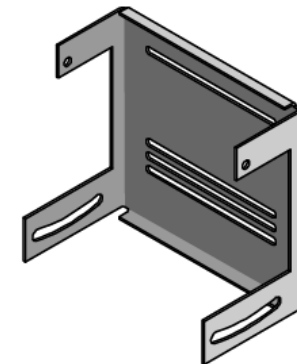
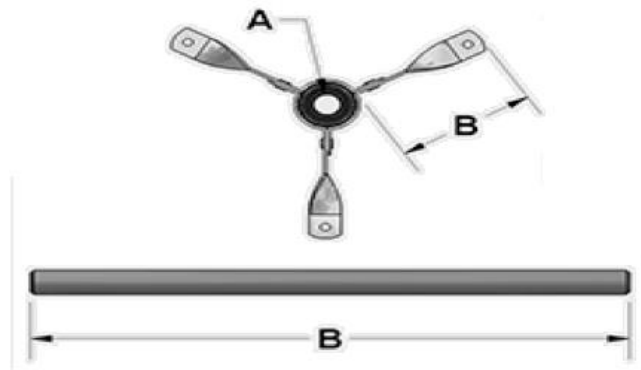
Part Number	Description	Qty Required	Dimensions			
			A	B	C	D
R-6030017	Wheel, G12BD-58-3/4-RH-RCD-LH-LCD	1	3/4"	12-7/8"	12-13/16"	N/A
R-2100255	SHAFT, 3/4 X 20-1/2, 2KWY	1	3/4"	20-1/2"	N/A	2 KwY
R-B-6080004	Bearing Bracket Assembly, G12 B/B,LD (c/w bearing and sleeve)	2	3/4"	6-3/8"	N/A	N/A
R-B-8100000	Ball Bearing,3/4 Complete with Rubber Sleeve	2	3/4"	N/A	N/A	N/A
R-B-3000022	212 DOOR	2	N/A	N/A	N/A	N/A
R-B-3180041	212 Motor Platform	1	N/A	N/A	N/A	N/A
R-B-7010033	Parts Bag,200 SERIES	1	N/A	N/A	N/A	N/A
R-B-8860014	Rubber Grommets (#19)	4	N/A	N/A	N/A	N/A



Wheel



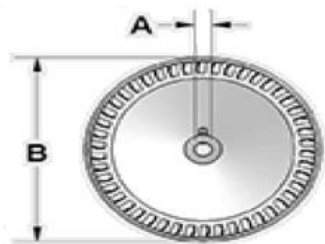
Bearing, Bearing Bracket and Shaft



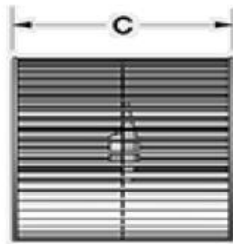
Motor Mount Platform

212-2 Duct Blower - Part# 9020119

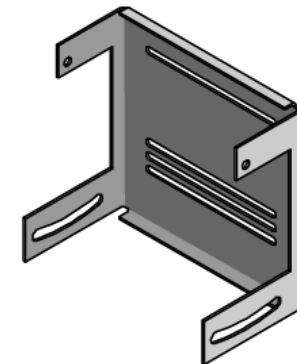
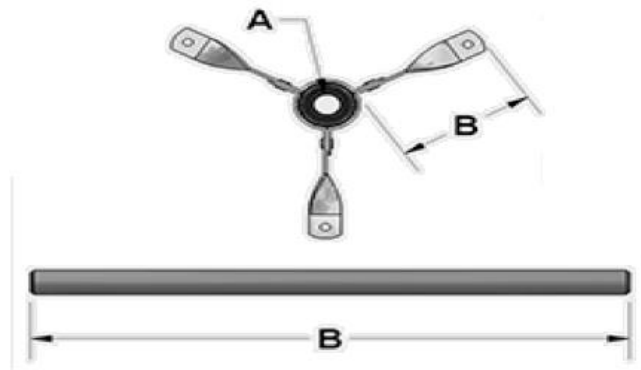
Part Number	Description	Qty Required	Dimensions			
			A	B	C	D
R-6030017	Wheel, G12BD-58-3/4-RH-RCD-LH-LCD	2	3/4"	12-7/8"	12-13/16"	N/A
R-2100255	SHAFT, 3/4 X 40-1/8, 2KWY	1	3/4"	40-1/8"	N/A	2 KwY
R-B-6080004	Bearing Bracket Assembly, G12 B/B,LD (c/w bearing and sleeve)	3	3/4"	6-3/8"	N/A	N/A
R-B-8100000	Ball Bearing,3/4 Complete with Rubber Sleeve	3	3/4"	N/A	N/A	N/A
R-B-3000022	212 DOOR	2	N/A	N/A	N/A	N/A
R-B-3180041	212 Motor Platform	1	N/A	N/A	N/A	N/A
R-B-7010033	Parts Bag,200 SERIES	1	N/A	N/A	N/A	N/A
R-B-8860014	Rubber Grommets (#19)	8	N/A	N/A	N/A	N/A



Wheel



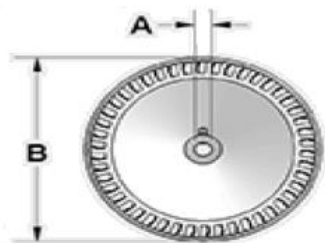
Bearing, Bearing Bracket and Shaft



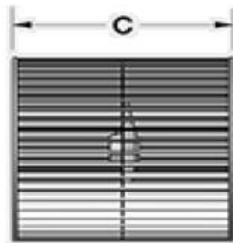
Motor Mount Platform

215 Duct Blower - Part# 9020105 / 9020110

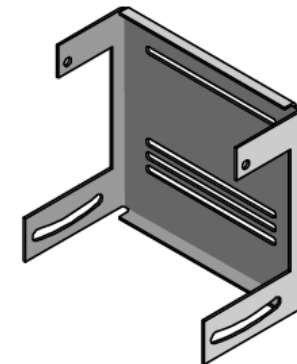
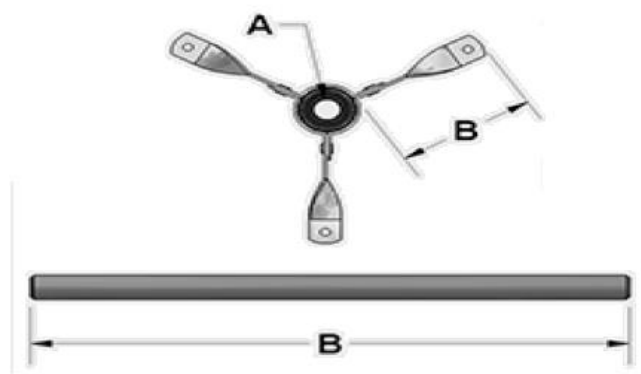
Part Number	Description	Qty Required	Dimensions			
			A	B	C	D
R-6030028	Wheel, G15BD-70-1-RH-RCD-LH-LCD	1	1"	15-1/2"	15-1/16"	N/A
R-2100056	Shaft, 1 X 25, 2KWY	1	1"	25"	N/A	2 Kwy
R-B-6080008	Bearing Bracket Assembly, G15 B/B (c/w bearing and sleeve)	2	1"	7-1/16"	N/A	N/A
R-B-8100001	Ball Bearing, 1" Complete with Rubber Sleeve	2	1"	N/A	N/A	N/A
R-B-3000028	215 DOOR	2	N/A	N/A	N/A	N/A
R-B-3180042	215 Motor Platform	1	N/A	N/A	N/A	N/A
R-B-7010033	Parts Bag, 200 SERIES	1	N/A	N/A	N/A	N/A
R-B-8860014	Rubber Grommets (#19)	4	N/A	N/A	N/A	N/A



Wheel



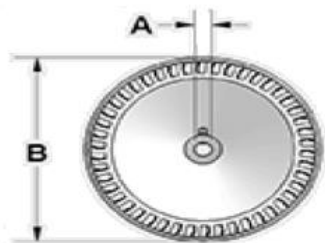
Bearing, Bearing Bracket and Shaft



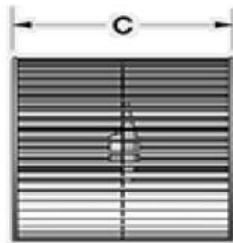
Motor Mount Platform

215-2 Duct Blower - Part# 9020120

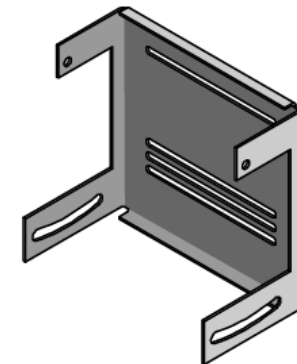
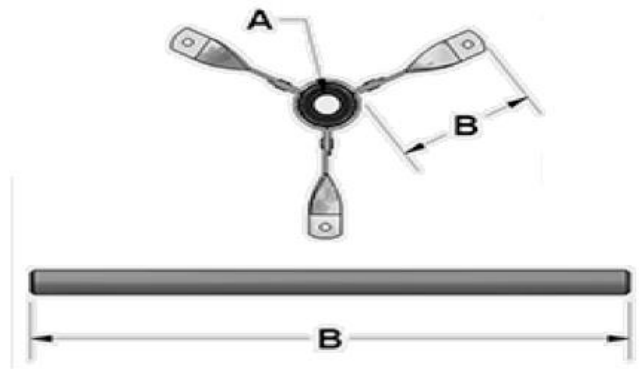
Part Number	Description	Qty Required	Dimensions			
			A	B	C	D
R-6030028	Wheel, G15BD-70-1-RH-RCD-LH-LCD	2	1"	15-1/2"	15-1/16"	N/A
R-2100051	Shaft, 1 X 61-3/8, 2KWY	1	1"	61-3/8"	N/A	2 KwY
R-B-6080008	Bearing Bracket Assembly, G15 B/B (c/w bearing and sleeve)	3	1"	7-1/16"	N/A	N/A
R-B-8100001	Ball Bearing, 1" Complete with Rubber Sleeve	3	1"	N/A	N/A	N/A
R-B-3000028	215 DOOR	2	N/A	N/A	N/A	N/A
R-B-3180042	215 Motor Platform	1	N/A	N/A	N/A	N/A
R-B-7010033	Parts Bag, 200 SERIES	1	N/A	N/A	N/A	N/A
R-B-8860014	Rubber Grommets (#19)	8	N/A	N/A	N/A	N/A



Wheel



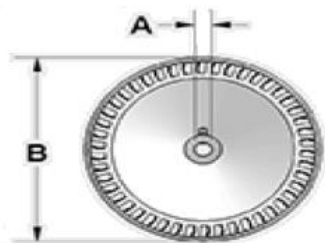
Bearing, Bearing Bracket and Shaft



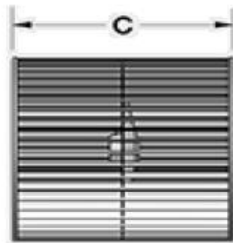
Motor Mount Platform

218 Duct Blower - Part# 9020121 / 9020122

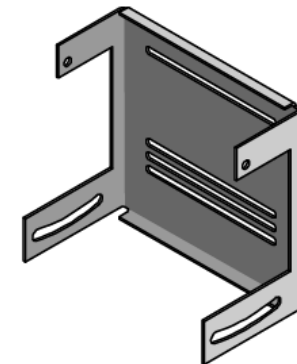
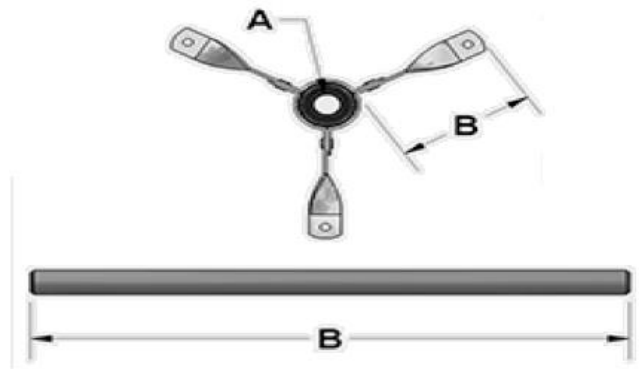
Part Number	Description	Qty Required	Dimensions			
			A	B	C	D
R-6030031	Wheel, G15BD-70-1-RH-RCD-LH-LCD	1	1"	18-1/2"	18-1/2"	N/A
R-2100054	Shaft, 1 X 30-1/8", 2KWY	1	1"	30-1/8"	N/A	2 KwY
R-B-6080009	Bearing Bracket Assembly, G15 B/B (c/w bearing and sleeve)	2	1"	8-3/8"	N/A	N/A
R-B-8100001	Ball Bearing, 1" Complete with Rubber Sleeve	2	1"	N/A	N/A	N/A
R-B-3000092	218/9218 DOOR	2	N/A	N/A	N/A	N/A
R-B-3180045	218 Motor Platform	1	N/A	N/A	N/A	N/A
R-B-7010033	Parts Bag, 200 SERIES	1	N/A	N/A	N/A	N/A
R-B-8860014	Rubber Grommets (#19)	4	N/A	N/A	N/A	N/A



Wheel



Bearing, Bearing Bracket and Shaft



Motor Mount Platform