

ENERGY EFFICIENT WITH POWER SAVINGS UP TO 75%
IDEAL FOR POULTRY BARN



PCF24-EC

The 24" PCF-EC series fan is the most energy efficient fan on the market for low speed air movement. They are made with a durable, corrosion proof PVC ventilation pipe and utilizes the Canarm ECsmart motor. They are designed to promote uniform temperature throughout your poultry barn which will improve production levels, reduce temperature stress, eliminate condensation and improve the barns air quality and comfort levels. This is essential to providing the ideal environment for your birds to excel and thrive all the while saving you money off your energy bill.

FEATURES

- Variable speed EC motor on a 0-10v signal.
- 24" PVC ventilation pipe will not rust, chip or peel.
- Quiet 6 blade polypropylene corrosion proof airfoil.
- Power savings of up to 75%.

MAXIMUM SPEED



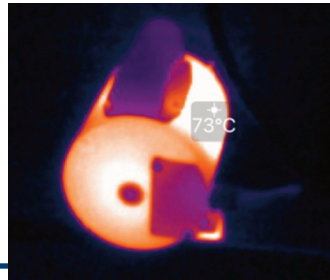
- 209 Watts
- 1.59 Amps
- 5400 CFM

MINIMUM SPEED

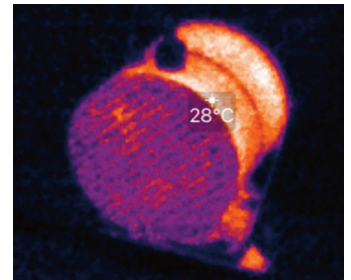


- 23 Watts
- 0.2 Amps
- 1920 CFM

THERMAL IMAGING



REGULAR MOTOR
Temperature after 1 hour - 73°C

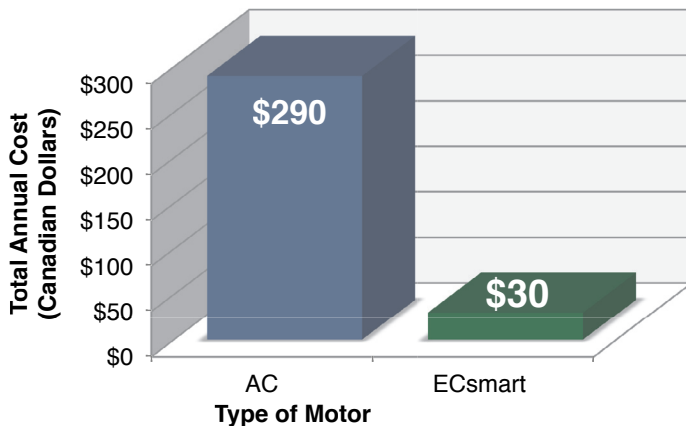


EC MOTOR
Temperature after 1 hour - 28°C

EC VS AC MOTOR COST SAVINGS

Results show cost savings of a typical 24" fan using a regular motor vs a 24" fan using the ECsmart motor over a period of 365 days.

AT MAXIMUM SPEED, THIS FAN RUNS AT OVER 25 CFM/W!



SAVE UP TO \$258.86 /YEAR WITH THIS MOTOR

@ LOW SPEED	EC	AC
Amps	0.21 A	2.68 A
Power	23.1 W	216.4 W
Volts	238.9 V	111 V
Input Cost of kWh	\$0.15	\$0.15
Input # hours per day	24 hrs/day	24 hrs/day
Total Annual Cost	\$30.22	\$289.08
Annual Savings by switching to ECsmart	\$258.86	

ENERGY EFFICIENT WITH POWER SAVINGS UP TO 75%
IDEAL FOR POULTRY BARNs



PCF18-EC

The 18" PCF-EC series fan is the most energy efficient fan on the market for low speed air movement. They are made with a durable, corrosion proof PVC ventilation pipe and utilizes the Canarm ECsmart motor. They are designed to promote uniform temperature throughout your poultry barn which will improve production levels, reduce temperature stress, eliminate condensation and improve the barns air quality and comfort levels. This is essential to providing the ideal environment for your birds to excel and thrive all the while saving you money off your energy bill.

FEATURES

- Variable speed EC motor on a 0-10v signal.
- 18" PVC ventilation pipe will not rust, chip or peel.
- Quiet 6 blade polypropylene corrosion proof airfoil.
- Power savings of up to 75%.

MAXIMUM SPEED

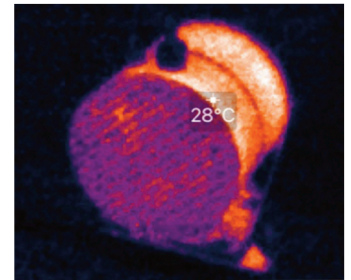
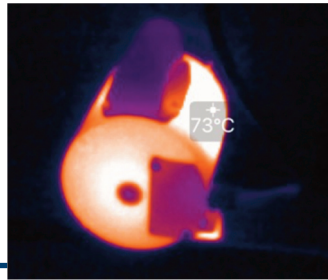
MINIMUM SPEED



- 199.7 Watts
- 1.41 Amps
- 3050 CFM

- 10.7 Watts
- 0.10 Amps
- 1070 CFM

THERMAL IMAGING



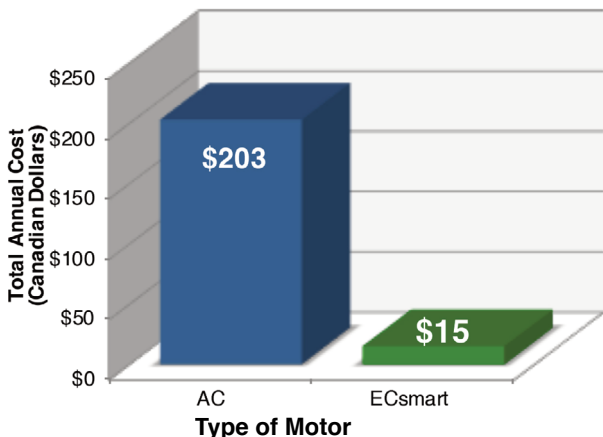
REGULAR MOTOR
Temperature after 1 hour - 73°C

EC MOTOR
Temperature after 1 hour - 28°C

EC VS AC MOTOR COST SAVINGS

Results show cost savings of a typical 18" fan using a regular motor vs a 18" fan using the ECsmart motor over a period of 365 days.

AT MAXIMUM SPEED, THIS FAN RUNS AT OVER 15.27 CFM/W!



@ LOW SPEED	EC	AC
Amps	0.21 A	2.68 A
Power	23.1 W	216.4 W
Volts	238.9 V	111 V
Input Cost of kWh	\$0.15	\$0.15
Input # hours per day	24 hrs/day	24 hrs/day
Total Annual Cost	\$30.22	\$289.08
Annual Savings by switching to ECsmart	\$258.86	

Costs shown in Canadian dollars



The Serco HVLS fan system provides high quality velocity cooling for all types of livestock. The variable speed operation allows for the system to adjust based on current temperature conditions in your barn. In addition, the reverse operation function blows air upward which mixes the layered heat throughout the barn in cold weather.

The HVLS design means that the fans run at a very low speed which reduces the noise level well below that of high speed fans.

The HVLS fan system is available with a stand alone thermostat controller for automatic variable speed adjustment. They can also be operated with the Unity NATVENT Control which can be used to operate your natural ventilation system as well.

FEATURES

- Optimized 5 blade profile for low speed rotary airfoil application and near ground effect.
- Large air current depth - horizontal floor jet of 3-9 ft (1-3 m).
- NACA airfoil profile reduces drag while producing more airflow.
- Standard black corrosion resistant anodized blades.
- Fan safety system includes guy wires and safety cable.
- Patent pending aluminum hub and blade support system.
- High efficiency variable frequency drive (VFD)
- Adjustable speed control panel with forward / off / reverse switch, self-diagnostics and 4 digit pass code protection.
- Aerodynamic blade winglets with patent pending design and made from high density polyethylene (HDPE).
- Supplied with 25 feet of power cable pre-wired to fan motor (connection to power source by others.)
- UL certified motor and controls.
- Fused disconnect and line reactor standard.



SPECIFICATIONS

FAN SIZE (FT)	HP	CFM	HANGING WEIGHT (LBS)	NORMAL INDUSTRIAL SPACING (FT)
8	1	53,693	160	55
10	1	83,025	181	60
12	1	97,695	190	65
14	1	128,010	194	70
16	1	158,911	215	90
18	1	179,015	224	95
20	1	237,231	232	100

SOURCE VOLTAGE

Standard Power	208-230V 1Ø or 3Ø, 460-480V, 575V 3Ø
Optional Power	120V

WARRANTY

- Lifetime warranty on blades, hub and frame.
- 12 year service life limited warranty.
- 3 years parts and 1 year labour.

CONSTRUCTION

Frame	Black powder coat / Welded steel fabrication
Hub Assembly	6061-T6 aluminum
Blade Struts (invertible)	Clear zinc / High tensile steel
Blades	Anodized / 6063-T6 aluminum
Blade end Winglets	High density polyethylene (HDPE)

SAFETY COMPONENTS

Steel Hub Plate	
Safety Cable	Galvanized 1/4" x 7 x 19 steel aircraft grade cable
Guy Wires	Galvanized 1/8" x 7 x 19 steel aircraft grade cable
Rotor Retaining Ring	Zinc plated / 3/16 A569 steel

MOUNTING HARDWARE

Standard Mount	Universal I-Beam clamp with swivel joint & 12" drop
Laminated Wood Beam Clamp (optional)	Brackets
Extra Wide / Thick I-Beam Mount (optional)	Consult Factory
Additional Drop Extensions (optional)	Up to 10 ft in 1 ft increments

GEARBOX & MOTOR

Enclosure / Insulation Class / Efficiency Class	IP55 / F / 1E2
Type	2 stage helical
Service Interval	Lubed for life

VFD ASSEMBLY

Enclosure	NEMA 4X
Remote CAT 5E Cable	2 - 100 feet (30.48m)
50hz Operation (optional)	Not included with iFAN™ option
Disconnect	Panel mount, UL / CE
UL Certified	
Line Reactor & Internal Fusing Included	

FAN CONTROL STATION

Type	Touchscreen LCD
Connection	CAT 5E (provided)
Mounting	STD wall J-box



AP-1046
AUTOPILOT MULTI-FAN
CONTROLLER

Wall mounted controller with 7" LCD touchscreen interface. Web-based controller supports up to 24 fans. The included mobile controller app allows full control of all your fans from anywhere on or off your WIFI network.



RC-1077
RADAR
CONTROLLER

Digital interface controls all fan functions including programming, fault viewing, and more. Control up to 63 fans individually or as a group. Operate fans for cooling or destratification.



TF-1047
TOUCH 'N' GO
CONTROLLER

Operate a single fan in forward / reverse with 0-100% speed control. Easily mounts to wall or electric gang box. Fully digital interface with password lockout capability. Includes 50 ft. of 4-core cable for installation.



VLD-1069
VLD
CONTROLLER

Wall mounted controller with 7" LCD touchscreen interface. Web-based controller supports up to 24 fans. The included mobile controller app allows full control of all your fans from anywhere on or off your WIFI network.



SY-1034-1
SINGLE YOKE CONTROL

Includes Fwd/Off/Rev switch and 0-10 speed pot to control fan speed. 100 Ft., 6-core shielded cable. One per fan required.



DY-1034-2
DOUBLE YOKE CONTROL

Includes Fwd/Off/Rev switch and 0-10 speed pot to control fan speed. Nema 4X. 2) 100 Ft., 6-core shielded cables. One per two fans required.



TY-1034-3
TRIPLE YOKE CONTROL

Includes Fwd/Off/Rev switch and 0-10 speed pot to control fan speed. 3) 100 Ft., 6-core shielded cables. One per three fans required.



UL-1067
ULTRALITE CONTROL

Easily mounts to wall for controlling each fan individually. Allows operation of the fan for cooling and destratification.

TRI-LITE EC SERIES CONTROLLERS



SY-1034-1
SINGLE YOKE CONTROL

Includes Fwd/Off/Rev switch and 0-10 speed pot to control fan speed. 100 Ft., 6-core shielded cable. One per fan required.



DY-1034-2
DOUBLE YOKE CONTROL

Includes Fwd/Off/Rev switch and 0-10 speed pot to control fan speed. Nema 4X. 2) 100 Ft., 6-core shielded cables. One per two fans required.



TY-1034-3
TRIPLE YOKE CONTROL

Includes Fwd/Off/Rev switch and 0-10 speed pot to control fan speed. 3) 100 Ft., 6-core shielded cables. One per three fans required.



UL-1067
ULTRALITE CONTROL

Easily mounts to wall for controlling each fan individually. Allows operation of the fan for cooling and destratification.



VLD-1069
VLD CONTROLLER

Wall mounted controller with 7" LCD touchscreen interface. Web-based controller supports up to 24 fans. The included mobile controller app allows full control of all your fans from anywhere on or off your WIFI network.



CP96PG/CP120PG



This economic, high volume low speed fan design is ideal for circulating air in Workshop and Warehouse Applications and can help save energy year round.

The FANBOS blankets a very large area by constantly moving air to create an expansive comfort zone. As a result, the big ceiling fan can create an evaporative cooling effect of three to four degrees throughout the facility. During the heating season, The FANBOS can destratify uneven temperatures that can be in excess of fifteen degrees from ceiling to floor. This results in significant energy savings since the heating system cycles less frequently.



CP96WH/CP120WH



CP96-LEDBK
Complete with light kit



CP96BK/CP120BK

Optional 1000 Lumens Light Kits



LK-CPPG - Grey



LK-CPWH - White



LK-CPBK - Matte Black

FEATURES

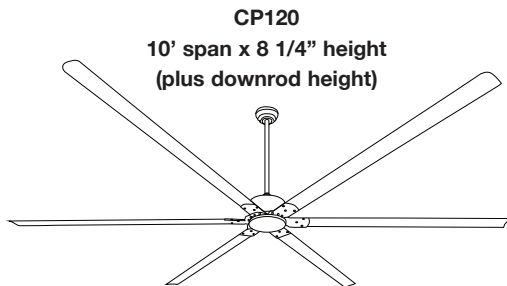
- Six aluminum airfoils contoured for maximum air movement.
- DC motor for quiet performance and low operating cost.
- 5 speed forward and reverse with remote control (wall mountable).
- Control multiple fans with one remote within 50'.
- 1/4" powder-coated steel and anodized aluminum chassis resists rusting and corrosion even in cold and damp environments.
- Standard with a 1" diameter 12" downrod mount. Optional 24" and 36" long downrods are available to purchase.
- Easy installation with standard ball hanger design.
- 48" lead wires.
- 120 volt.
- Damp rated.
- Available in grey, white and matte black finishes.
- CP96-LEDBK comes complete with light kit.
- Title-20 certified.
- 5 year warranty.

PERFORMANCE SPECIFICATIONS

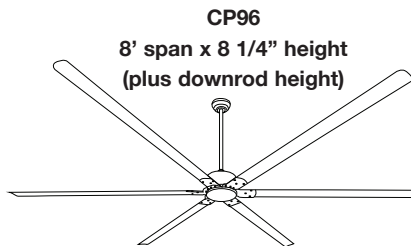
CP120						
SPEED	RPM	CFM	CFM/W	WATTS	AMPS	EFFICIENCY
HIGH SPEED	69	20693	335	61.8	0.9	565 CFM/W
LOW SPEED	32	11087	1827	9.1	0.1	
CP96						
SPEED	RPM	CFM	CFM/W	WATTS	AMPS	EFFICIENCY
HIGH SPEED	105	16729	281	61.6	0.9	487 CFM/W
LOW SPEED	49	10292	1711	6.0	0.1	



DIMENSIONS



CP120
10' span x 8 1/4" height
(plus downrod height)



CP96
8' span x 8 1/4" height
(plus downrod height)



**COMPLETE WITH
5 SPEED CONTROL**

CANARM LTD. - Corporate Office
PO Box 367 2157 Parkedale Ave.,
Brockville, ON
Canada K6V 5V6
Tel: (613) 342-5424 Fax: 1-800-263-4598

Arthur Manufacturing Facility
#7686 Concession 16, RR 4
Arthur, ON
Canada N0G 1A0
Tel: (519) 848-3910 Fax: (519) 848-3948

Montréal Warehouse
2555 Rue Bernard Lefebvre
Laval, QC
Canada H7C 0A5
Tel: (450) 655-2535 Fax: (450) 665-0910

CANARM LTD. - USA Warehouse
808 Commerce Park Drive
Ogdensburg, New York,
USA 13669
Tel: 1-800-267-4427 Fax: 1-800-263-4598



FIBERGLASS RECIRCULATION FAN

One of our most versatile products is the Cyclone Plus variable speed fiberglass recirculation fan. Traditional ceiling fans slowly push the hot air from the ceiling down to the floor. The Cyclone Plus can do this on low speed and then as the speed increases; it creates air velocity for maximum air throw and cooling.

APPLICATIONS

In dairy barns, Cyclone Plus creates very high air velocity for animal cooling, insect control, drying of bedding and employee comfort. Cyclone Plus unique airfoil deflectors direct the air over and under the animals. One Cyclone Plus can replace up to eight 36" basket fans and while using only half the power required for those. On low speed, you have an ideal winter fan for re-circulating air throughout the building, reducing humidity and recapturing trapped heat at the ceiling.

TECHNICAL SPECIFICATIONS FGCY72-33

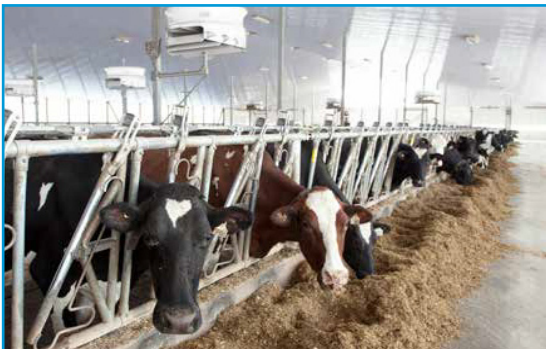
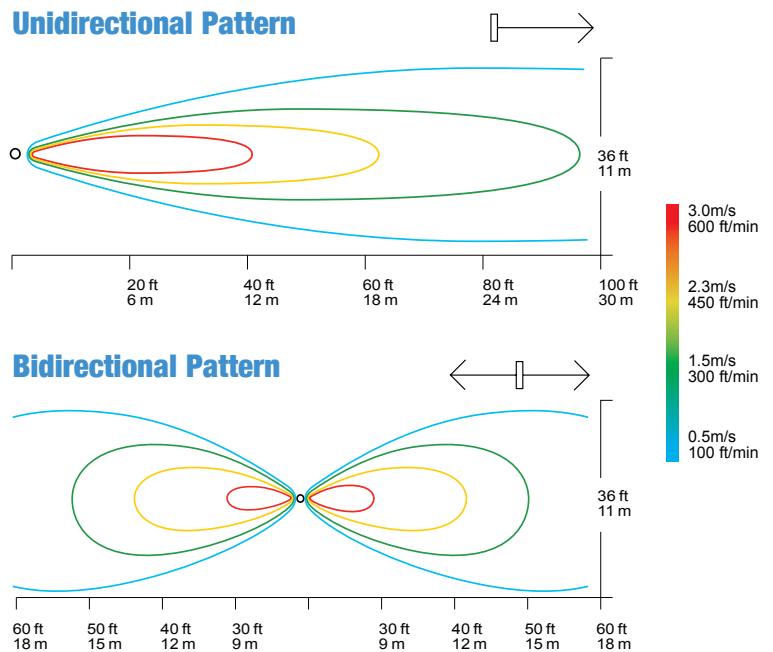
Propeller Dimension	1.83m (72")			
HP	3.0			
Phase	1	3		
Voltage	230	208	230	460
Amperage *	13.2	8.6	8	4.3
Speed	Single		Variable	
RPM	304		60 @ 304	
Fan	Corrosion Resistant Steel			
Deflectors	100% PVC			
Blades	6-Aluminium			
Air Flow**	1 260 m ³ /min (44 562 CFM)			
Efficiency	0.68 m ³ /min (24.2 CFM) per Watt (24.1 lbf) per kW			

* The Amps values depend on the motor manufacturer
Available motors: 50 or 60 hertz
** Speed (RPM) shown is nominal. Performance is based on actual speed of test.

THE ADVANTAGES OF CYCLONE PLUS

- The Cyclone Plus perform 44 562 CFM with 24.2 CFM per Watt. At nominal speed of 304 RPM with three phase 230/460V - 60Hz motor.
- The Cyclone Plus is quieter.
- Less loss of air at the sides of the fan.
- Includes an automatic belt tensioner.
- The outlet air is more in line with the fan.
- The Cyclone Plus is better balanced and vibrates less.
- The belt change is easily done without removing the propeller.

AIRFLOW DIAGRAMS



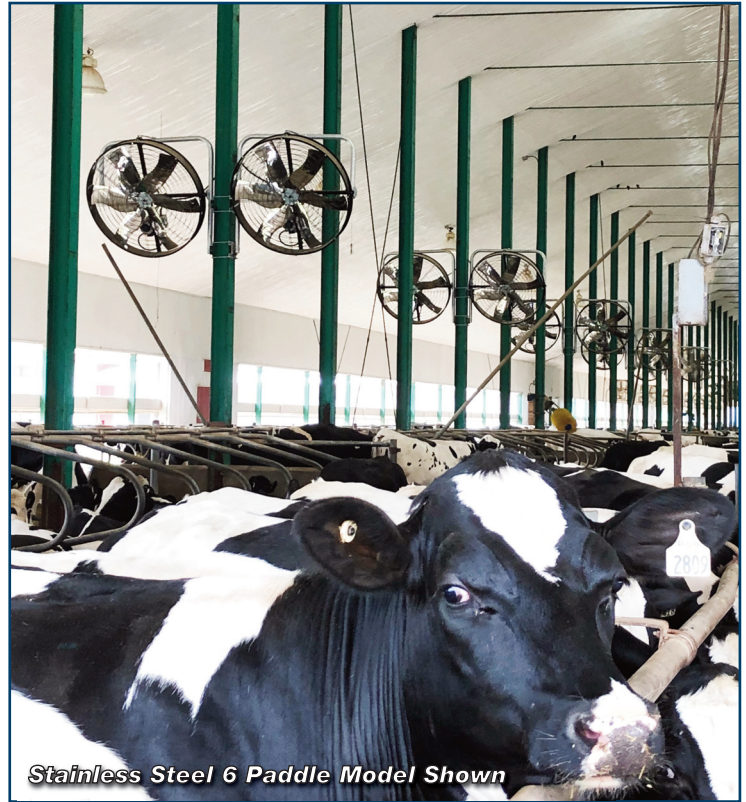
INNOVATIVE • LOW COST • LOW MAINTENANCE

IDEAL FOR DAIRY COW COOLING

NOW AVAILABLE WITH EC MOTORS for energy savings



Plastic 3 Paddle Model Shown

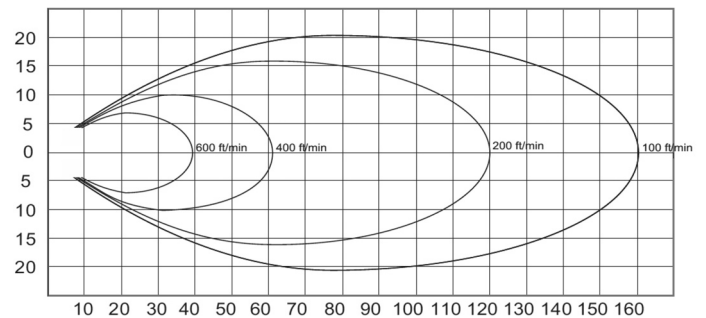


Stainless Steel 6 Paddle Model Shown

FEATURES

- New larger more rugged design.
- Strong, versatile and adjustable wall/post mount optional.
- Durable black powder coated finish.
- Comes with a ultra quiet and durable poly 3 paddle blade.
- Also available with 6 stainless steel paddles.

P54 1 HP MODEL



PERFORMANCE DATA & SPECIFICATIONS

MODEL	BLADE DIAMETER	BLADE MATERIAL	MOTOR SIZE	VOLTS	BLADE RPM	PHASE	CFM
PF54-A1-2019	54"	Plastic 3 Paddle	1 HP	230	600	1	28,000
PF54H-A1-2019	54"	Plastic 3 Paddle	1.5 HP	230	600	1	36,000
PF54-A1SS-2019	54"	Stainless Steel 6 Paddle	1.5 HP	230	600	1	36,000
PF54-AEC-2022	54"	Plastic 3 Paddle	1 HP	120/208/280	600	1 or 3	28,000

3 Phase options available upon request. Fan should be installed 10' from floor level. Post required to work with Canarm Mount should be 13' tall

CANARM LTD. - Corporate Office
PO Box 367 2157 Parkedale Ave.,
Brockville, ON
Canada K6V 5V6
Tel: (613) 342-5424 Fax: 1-800-263-4598

Arthur Manufacturing Facility
#7686 Concession 16, RR 4
Arthur, ON
Canada N0G 1A0
Tel: (519) 848-3910 Fax: (519) 848-3948

Montréal Warehouse
2555 Rue Bernard Lefebvre
Laval, QC
Canada H7C 0A5
Tel: (450) 655-2535 Fax: (450) 665-0910

CANARM LTD. - USA Warehouse
808 Commerce Park Drive
Ogdensburg, New York,
USA 13669
Tel: 1-800-267-4427 Fax: 1-800-263-4598

www.canarm.com
Subject to Change without notice.

agsales@canarm.ca
Printed in Canada

EFFECTIVE COOLING • LOW COST • INNOVATIVE

IDEAL FOR COW AND POULTRY COOLING

FEATURES

- 36" diameter.
- Strong, versatile wall/ceiling mount included.
- Versatile - hangs quickly and points anywhere.
- Strong, powder coated steel guards.
- 1/2 hp, 230 volt single or 3 phase motor.
- Durable poly wrapper.



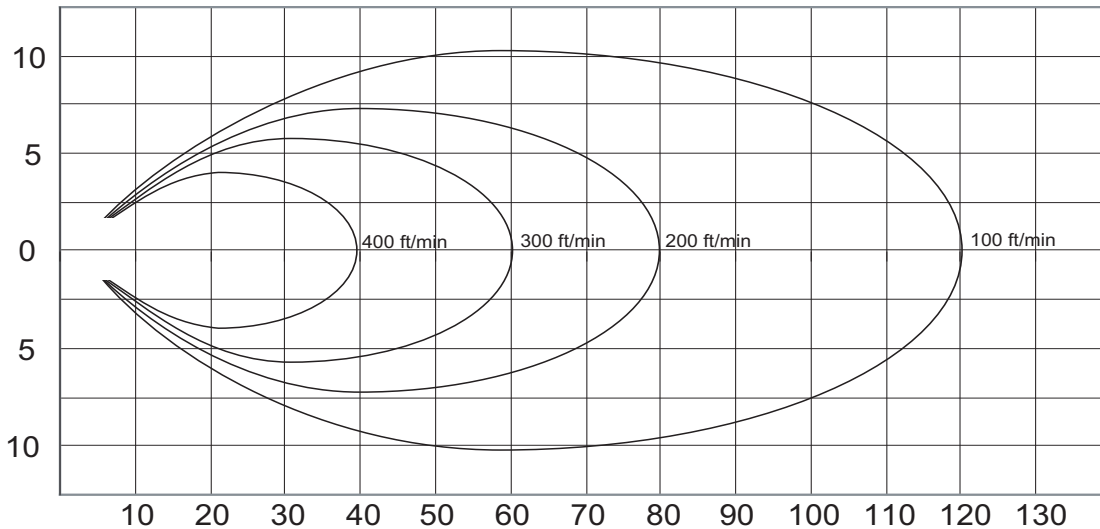
PERFORMANCE DATA & SPECIFICATIONS

MODEL	SIZE	H.P.	BLADE PADDLE	VOLTS	AMPS	Phs	RPM	SPEED	CFM 0" SP
PRF36-09	36"	1/2	3	115/230	6.6/3.3	1	850	Single	11,500
PRF363-09	36"	1/2	3	230/460	5.4/2.7	3	850	Single	11,500
PRF36-EC	36"	3/4	3	120/208/280	3/.13	1 or 3	850	Variable	11,500

VELOCITY MAPPING CHART

This chart indicates the air distribution pattern. It is a graphic illustration of air velocity in feet per minute.

PRF36-09 & PRF363-09



WARRANTY

- 1 year warranty on fan.

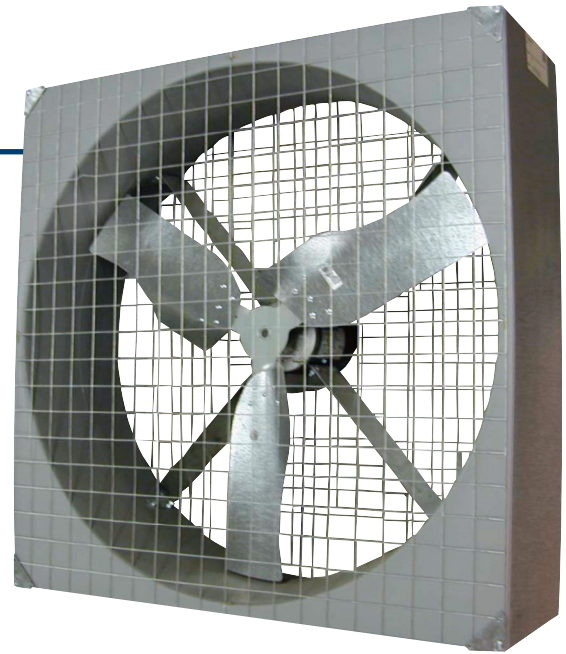
THIS MODEL IS SEASONAL
PLEASE CALL FOR DELIVERY DETAILS

ENERGY SAVINGS • COST EFFECTIVE • EFFICIENT

IDEALLY SUITED FOR CIRCULATING AIR IN INDUSTRIAL & COMMERCIAL APPLICATIONS. SAVE ENERGY YEAR ROUND.

FEATURES

- 36" and 48" models.
- Patented design provides higher air volumes at maximum efficiency (U.S. Patent #5,803,709)
- The poly box design is virtually self-cleaning and will not rust, peel, chip or rot.
- The gray poly box is UV treated and will stay looking like new through years of use.
- Fans are provided with 2 x 2 galvanized wire mesh screens.
- Motors are high efficiency and direct drive. The three phase 1/2 hp motors have built in thermal protection for the dairy market.
- The fans can be suspended from the corner clips provided on the fans or easily angled using the hanging bracket kit accessories.



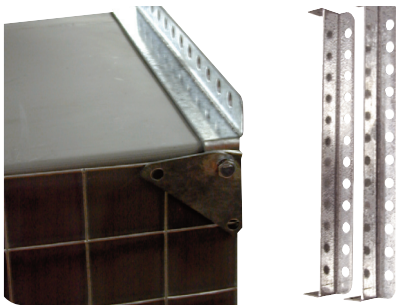
PERFORMANCE DATA & SPECIFICATIONS

PART #	SIZE	H.P.	BLADE PADDLE	VOLTS	AMPS	Phs	RPM	SPEED	CFM 0" SP	CFM/WATT	DIMENSIONS
CPF36G38G20	36"	1/2	3	115/230	6/3	1	850	Single	12,200	21.3	40" x 40" x 13"
CPF36G44G20	36"	1/2	3	208-230/460	2.4/1.2	3	850	Single	12,200	23.0	40" x 40" x 13"
CPF48G23G20	48"	1	3	230	5	1	850	Single	21,000	22.4	52" x 52" x 11"
*CPF48G26G20	48"	1	3	208-230/460	5.2/2.6	3	850	Single	21,000	24.0	52" x 52" x 11"

* Note: Thermal protection not included.

MOUNTING OPTIONS

CPF36 with Hanging Bracket Kit



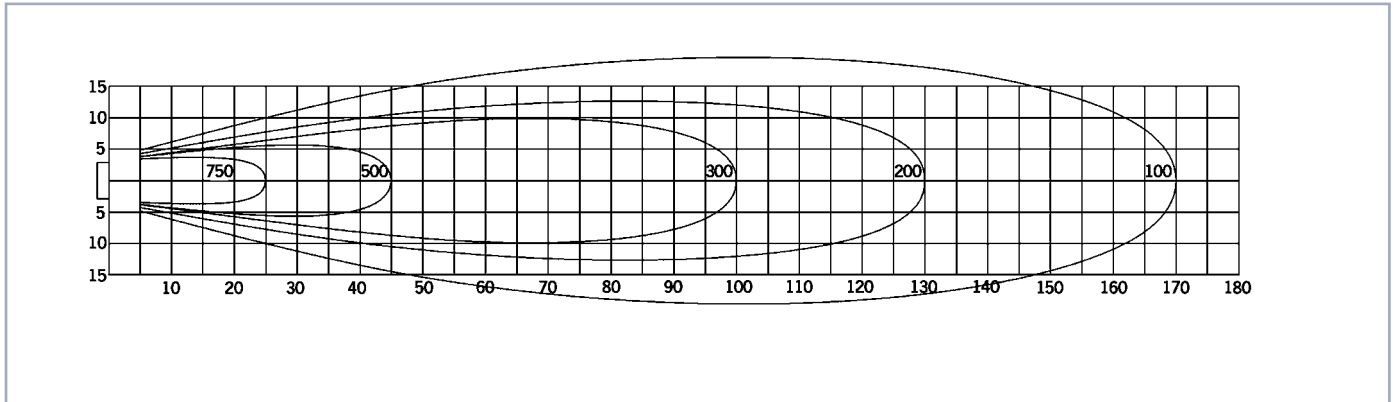
WARRANTY

- 1 year warranty on fan

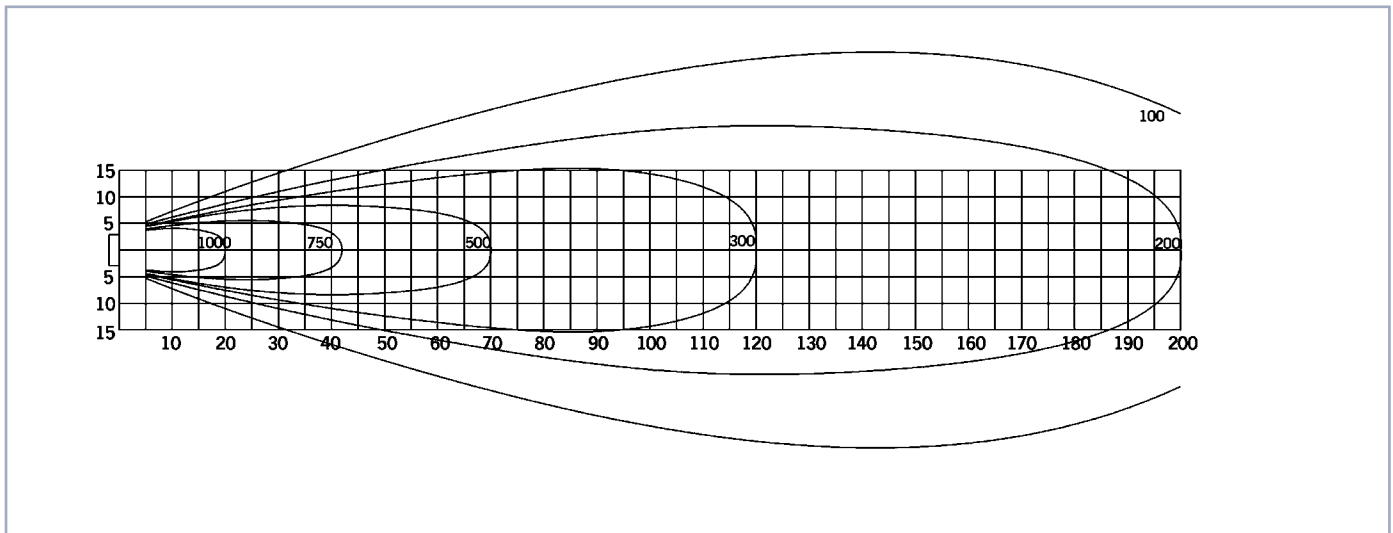
THIS MODEL IS
SEASONAL
CALL FOR AVAILABILITY &
DELIVERY DETAILS

This chart indicates the air distribution pattern. It is a graphic illustration of air velocity in feet per minute.

CPF36
3 Paddle



CPF48



ECONOMICAL • HIGH VELOCITY • EASY TO MOVE
EFFECTIVELY CIRCULATES LARGE VOLUMES OF AIR



HVR36

HVR24



FEATURES

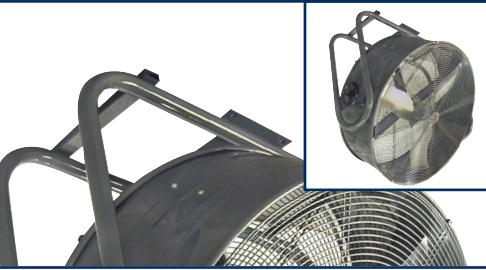
- Heavy 18 gauge, powder coated steel housing.
- Factory balanced blade.
- Permanently lubricated, totally enclosed motors.
- 2 speed dial switch on 24" & 36" models.
- Fan drum easily pivots up for directional control with strong locking mechanism.
- Complete with 10', 120V grounded cord.
- Powder coated front and rear guards meet OSHA standards.
- Heavy duty wheel kit makes this fan easy to move.
- 5" (HVR24) and 8" (HVR36) rubber wheels with steel hubs.
- Complete with conversion kit for ceiling mount.

THIS MODEL IS SEASONAL
PLEASE CALL FOR DELIVERY DETAILS

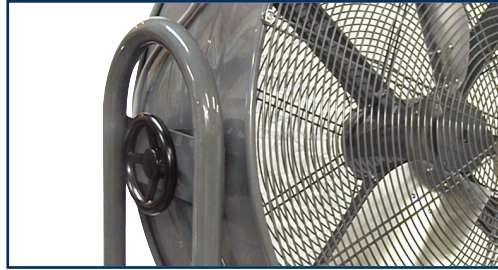
PERFORMANCE DATA & SPECIFICATIONS

MODEL	SIZE	SPEED	HP	RPM	CFM	VOLTS	AMPS	CFM / W	WEIGHT (LBS)
HVR24	24"	2	1/3	973 / 817	6724 / 5641	120	1.9	34.0 / 31.6	43
HVR36	36"	2	1/2	747 / 640	18564 / 16094	120	4.7	33.3 / 33.0	103

CEILING MOUNT OPTION CONVERSION KIT INCLUDED



DIRECTIONAL CONTROL EASY TO ADJUST/STRONG LOCKING

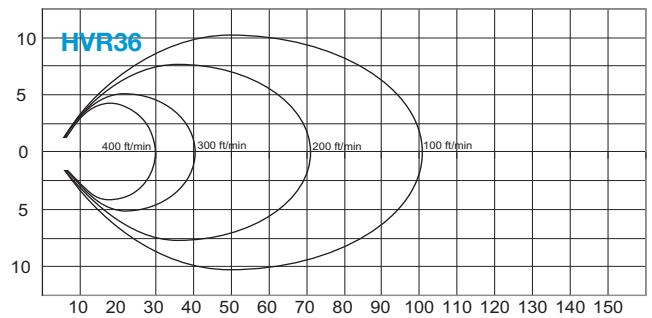
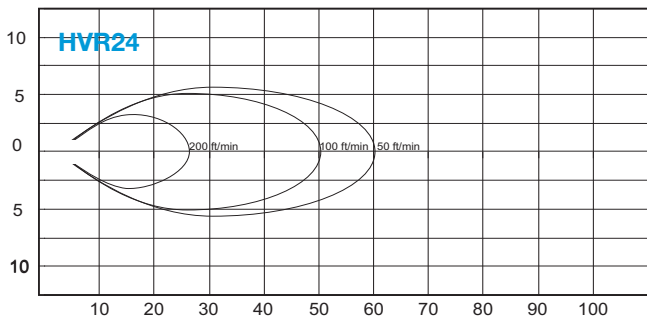


CONVENIENT DIAL SWITCH



VELOCITY MAPPING CHART

These charts indicate the air distribution pattern. They are graphic illustrations of air velocity in feet per minute.



CANARM LTD. - Corporate Office
PO Box 367 2157 Parkedale Ave.,
Brockville, ON
Canada K6V 5V6
Tel: (613) 342-5424 Fax: 1-800-263-4598

Arthur Manufacturing Facility
#7686 Concession 16, RR 4
Arthur, ON
Canada N0G 1A0
Tel: (519) 848-3910 Fax: (519) 848-3948

Montréal Warehouse
2555 Rue Bernard Lefebvre
Laval, QC
Canada H7C 0A5
Tel: (450) 655-2535 Fax: (450) 665-0910

CANARM LTD. - USA Warehouse
808 Commerce Park Drive
Ogdensburg, New York,
USA 13669
Tel: 1-800-267-4427 Fax: 1-800-263-4598

HIGH PERFORMANCE • LOW MAINTENANCE • EASY INSTALLATION

CANARM'S "TF" SERIES STAINLESS STEEL CIRCULATING PANEL FANS ARE DESIGNED FOR USE AS AIR TUBE CIRCULATORS, EXHAUST OR CIRCULATING FANS FOR HOG, POULTRY, DAIRY AND GREENHOUSES

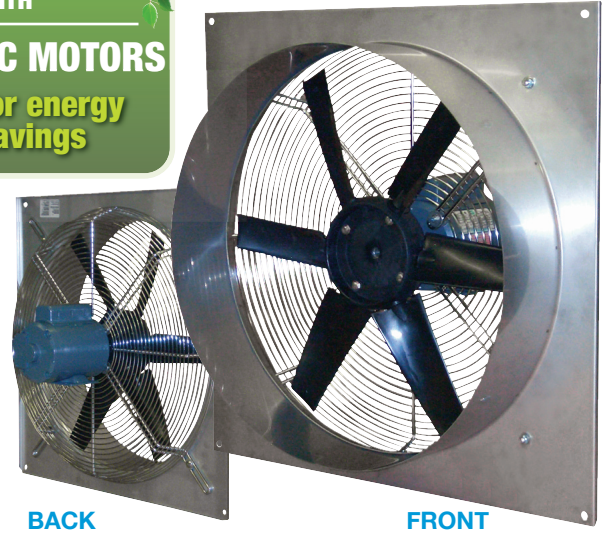
Canarm's "TF" Series Stainless Steel Circulating Panel Fans are designed for use in many applications. Four pre-punched mounting holes make the "TF" series fans easy to hang from chains or for permanent installation as a sidewall exhaust fan or intake fan.

The "TF" series stainless steel fan is ideally suited for use in recirculating ducts or air bags. An extension on the venturi is designed to make Air Bag attachment quick and easy.

FEATURES

- Available in 12", 16", 24" and 36" sizes.
- Dual voltage, totally enclosed, variable speed (except for 36"), high efficiency ball bearing motors with thermal overload protection.
- Canarm's exclusive "Rotair" air foil polypropylene blade is designed to deliver high volumes of air quietly and efficiently.
- The single speed 36" model has a high performance galvanized blade.
- Stainless steel panel will not rust and has an 4" extension to allow the installation of an air bag.
- All fans are shipped completely assembled.

NOW AVAILABLE WITH
EC MOTORS
for energy savings



BACK

FRONT

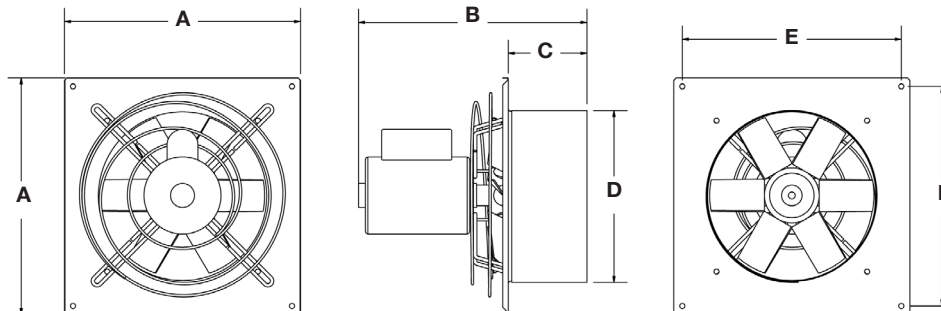
WARRANTY: 1 YEAR ON FAN.

PERFORMANCE DATA & SPECIFICATIONS

MODEL	FAN DIA.	MOTOR H.P.	MOTOR TYPE	FAN RPM	CURRENT LOAD		AIRFLOW CAPACITY - CFM			CFM/WATT	FRAMING DIMENSIONS	SHIPPING WGT. LBS.
					@115V	@230V	0" SP	.05" SP	.10" SP			
TF12	12"	1/4	High Efficiency Variable Speed Dual Voltage	1750	2.6	1.3	1,380	1,260	1,170	7.5	15 x 15	24
TF16	16"	1/4		1750	3.4	1.7	2,810	2,680	2,540	8.0	19 x 19	27
TF24	24"	1/2		1750	5.0	2.5	5,000	4,700	4,400	9.0	27 x 27	40
TF36	36"	1/2	Single	850	6.0	3.0	11,000	10,500	10,000	20.0	37 x 37	40

*Call for available EC Motors.

DIMENSIONS



FAN	A	B	C	D	E
TF12	17.250	16.750	5.750	12.500	16.000
TF16	21.250	16.750	5.750	16.500	20.000
TF24	29.250	16.750	5.750	24.625	28.000
TF36	38.875	12.500	3.625	36.750	37.500

CANARM LTD. - Corporate Office
PO Box 367 2157 Parkedale Ave.,
Brockville, ON
Canada K6V 5V6
Tel: (613) 342-5424 Fax: 1-800-263-4598

Arthur Manufacturing Facility
#7686 Concession 16, RR 4
Arthur, ON
Canada N0G 1A0
Tel: (519) 848-3910 Fax: (519) 848-3948

Montréal Warehouse
2555 Rue Bernard Lefebvre
Laval, QC
Canada H7C 0A5
Tel: (450) 655-2535 Fax: (450) 665-0910

CANARM LTD. - USA Warehouse
808 Commerce Park Drive
Ogdensburg, New York,
USA 13669
Tel: 1-800-267-4427 Fax: 1-800-263-4598

www.canarm.com

Subject to Change without notice.

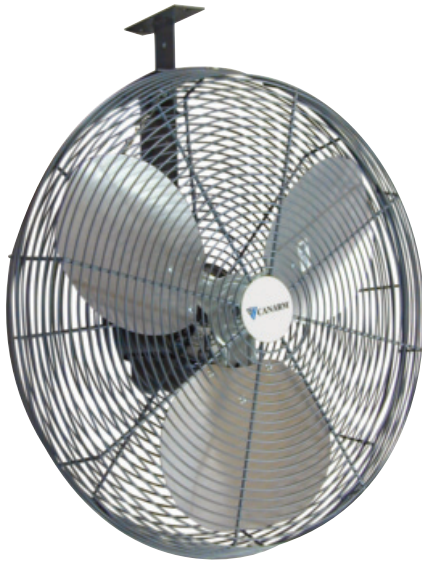
agsales@canarm.ca

Printed in Canada

HIGH PERFORMANCE • OSHA GUARDS • CORROSION RESISTANT

IDEAL FOR ALL AGRICULTURAL APPLICATIONS

FEATURES



- Single or variable speed (EC models), totally enclosed, sealed ball bearing, thermally protected, high efficiency, dual voltage, 115/230V.
- High volume, corrosion resistant blades.
- Polyester powder coated, steel wire guard to OSHA specifications.
- Galvanized Steel adjustable three way mount. Mount to wall, ceiling or overhead joist. Fan can pivot down and swivel left and right for pin-point control of air stream.
- Fan head comes pre-assembled to guarantee fan blade is in proper location on motor shaft for max performance and safety within the guard.
- Can operate with Canarm's manual or automatic thermostatic controls (sold separately)
- The fans should move air from the inlets towards the exhaust fans and into all areas to remove dead air pockets. The airstream should be directed across the back of the head and shoulders of the animals.
- Suitable for buildings with low ceilings.

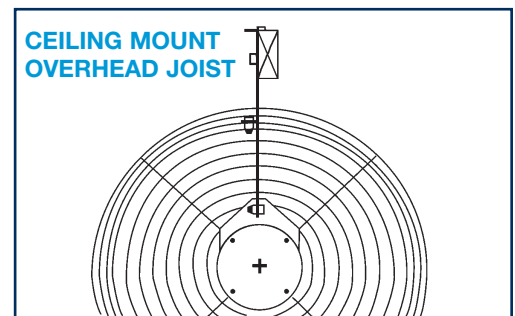
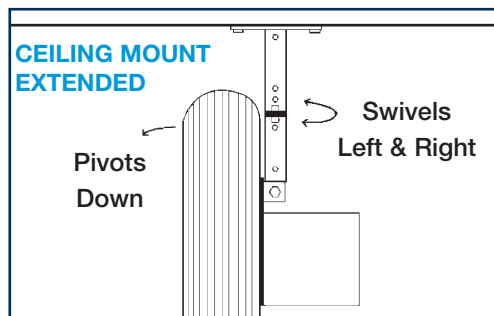
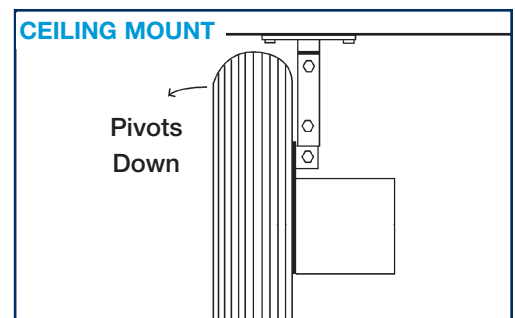
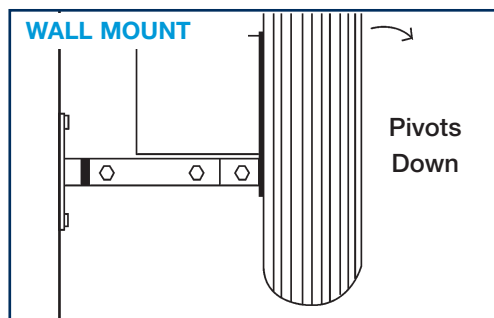
*Velocity mapping chart on back.

NOW AVAILABLE WITH EC MOTORS  **for energy savings**

PERFORMANCE DATA & SPECIFICATIONS

Model Number	Size	H.P.	RPM/Speed	CFM	Voltage	Amps	Weight (lbs.)
CA20AG-FVD	20"	1/3	1625/Single Speed	6,500	115/230V	4.2/2.1	37
CA20AG-EC	20"	1/3	Variable	6,500	120/208-280V	4.1/2.5-2.0	36
CA24AG-EC	24"	1/2	Variable	8,500	120/208-280V	5.7/3.5-2.8	43
CA30AG-EC	30"	1/2	Variable	11,000	120/208-280V	5.7/3.5-2.8	49

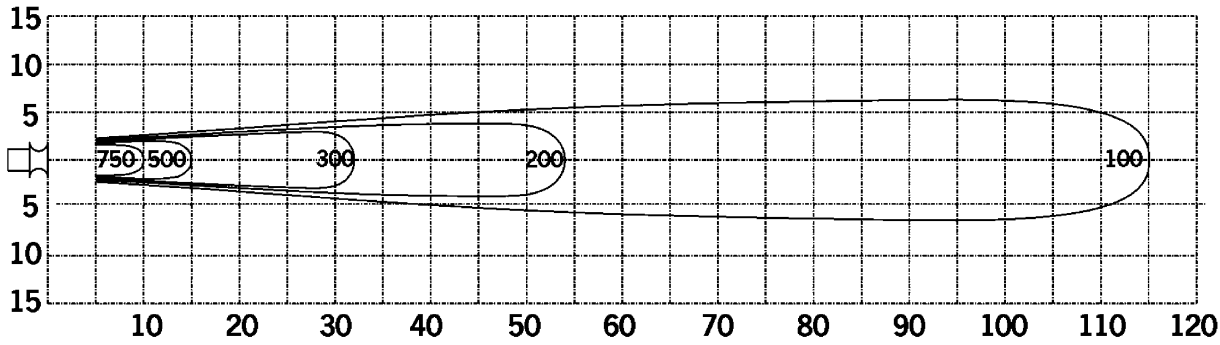
MOUNTING OPTIONS



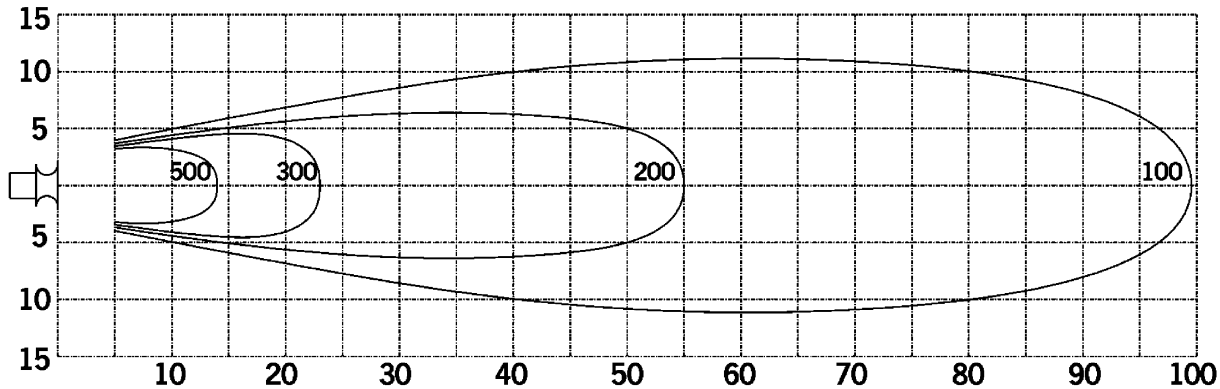
VELOCITY MAPPING CHARTS

These charts indicate the air distribution pattern. They are graphic illustrations of air velocity in feet per minute.

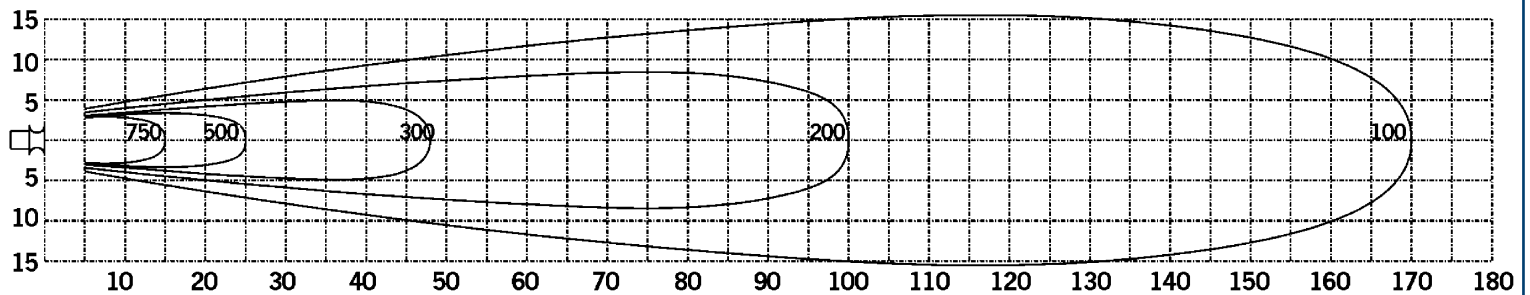
CA20AG



CA24AG



CA30AG



HIGH PERFORMANCE • GENTLE AIR FLOW • ENERGY EFFICIENT



HAF18

Canarm's HAF18 Horizontal airflow fan is designed to provide gentle circulation of air in greenhouses and other agricultural applications.

The HAF18 features a 1/8 HP totally enclosed, 120V motor. The variable speed motor can be adjusted accordingly to meet your requirements.

Featuring open guard spacing for better air distribution and a hanging bracket. When suspended, the fan can pivot up and down and swivel 360° for optimal control of air stream.

FEATURES

- 18" horizontal air flow fan.
- Totally enclosed motor.
- Powder coated guard has wide spacing to eliminate the build up of debris.
- 120V, 8 foot grounded cord & plug.
- Zinc dipped OSHA guard option available.

WARRANTY: 1 YEAR ON FAN.



HAF18-ZO

PERFORMANCE DATA & SPECIFICATIONS

MODEL NUMBERS	DESCRIPTION	VOLTAGE	MOTOR HP	WATT	AMPS	CFM	RPM	SPEED	SPEED CONTROL
HAF18	18" Greenhouse fan powder coated with Hanging Bracket	120V	1/8	130	1.1	2350	1550	Variable	Optional
HAF18-ZO	18" Greenhouse fan Zinc dipped with Hanging Bracket	120V	1/8	130	1.1	2350	1550	Variable	Optional

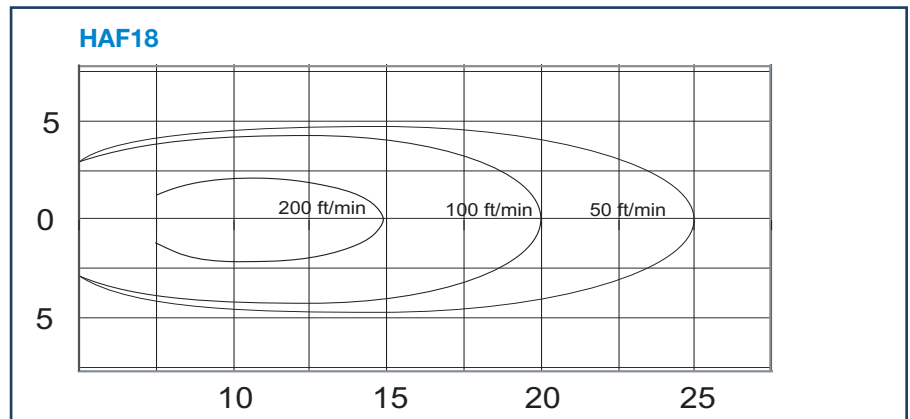
WIDE SPACED GUARD

Eliminates debris build up.

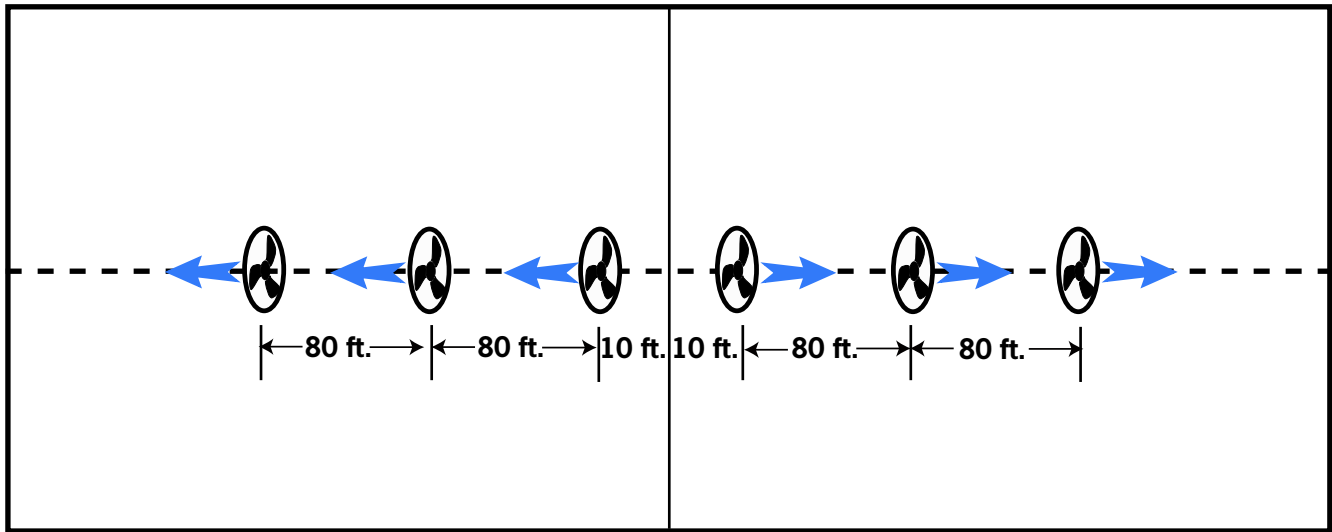


VELOCITY MAPPING CHART

This chart indicates the air distribution pattern. It is a graphic illustration of air velocity in feet per minute.

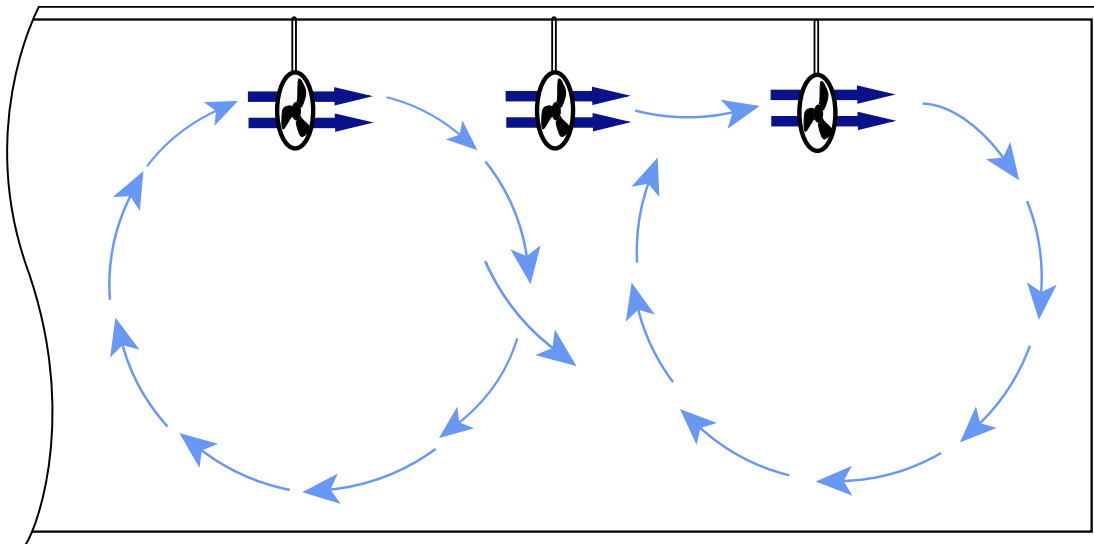


TYPICAL LAYOUT FOR HAF FANS IN 500' POULTRY HOUSES



Typical recirculating fan layout using six 18-inch axial vane fans, hung under ceiling along centerline of house. Fan number and spacings may vary according to house conditions.

TYPICAL AIRFLOW FOR HAF FANS



Typical airflow pattern for axial vane recirculating fans.



SUITABLE FOR WET LOCATIONS

FEATURES

- Ceiling or wall mount high velocity fan.
- 18" blades.
- Commercial duty 3 speed pull chain circulating fan.
- All metal construction.
- 1/8 hp motor.
- Three speed motor.
- Epoxy coated OSHA guard.
- 9' heavy duty cord with cord wrap.
- 110 volt cord set.
- Steel wall (ceiling) mount assembly.
- Suitable for wet locations.

PULL CHAIN

For Commercial Duty 3 Speed Fan.



EPOXY COATED OSHA GUARD



PERFORMANCE DATA & SPECIFICATIONS

MODEL	SIZE	H.P.	VOLTS	AMPS	Phs	RPM	SPEED	CFM	CMF / W	WEIGHT (LBS)
LF18HW	18"	1/8	120	1.41/1.22/1.01	1	1449/1273/1024	3	5043/4394/3540	30.9 / 30.4 / 29.1	26

CANARM'S "CA" CIRCULATING FANS EFFECTIVELY COOL LARGE AREAS IN FACTORIES, STORES, OFFICES, RESTAURANTS AND OTHER PUBLIC PLACES



Canarm's CA circulating fans economically provide relief from summer heat by creating a gentle air movement. They effectively cool large areas in factories, stores, restaurants and other public places. These fans have a low RPM motor which allows them to operate quietly.

The Floor Pedestal type fans come with a sturdy base and are supported by an adjustable tubular steel post which provides maximum stability. The Wall Mount fans are anchored with a sturdy wall bracket. There is also an optional ceiling mount.

On all fan models, the fan assembly can be tilted on a swivel bracket to direct air stream upwards or downwards. Available with oscillating motor on the pedestal and wall models.

FEATURES

- Rugged, high performance model.
- Available in 24" & 30" sizes.
- 1/4 HP, 3 speed, totally enclosed ball bearing motor with thermal overload protection.
- Fan motor RPM - 1100/950/850.
- Available with oscillating motor on the pedestal and wall models.
- Heavy gauge aluminum, well balanced fan blades.
- Air stream adjustable in all directions.
- Complete with 10', 120V grounded cord set.
- Attractive powder coated front and rear guards, meet OSHA standards.

QUICK REFERENCE GUIDE

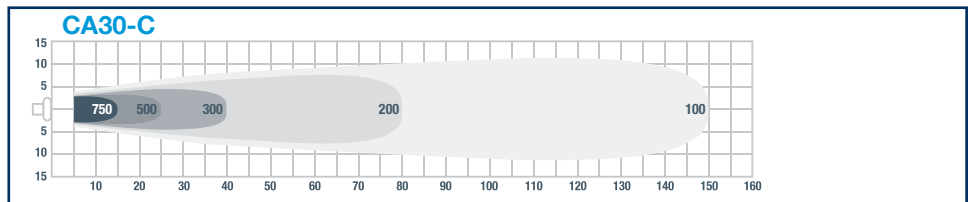
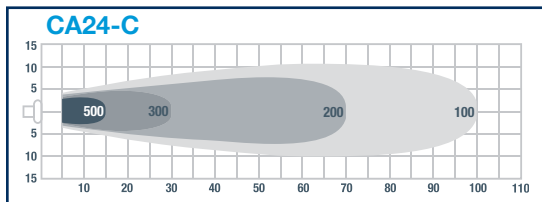
REPLACEMENT PARTS REFERENCE GUIDE		
OLD MODEL	DESCRIPTION	REPLACED WITH
CA24POSC-C	PEDESTAL FANS - OSCILLATING	CA24OSC-C + CFKPB
CA30POSC-C	PEDESTAL FANS - OSCILLATING	CA30OSC-C + CFKPB
CA24P-C	PEDESTAL FANS - NON-OSCILLATING	CA24-C + CFKPB
CA30P-C	PEDESTAL FANS - NON-OSCILLATING	CA30-C + CFKPB
CA24WOSC-C	WALL FANS - OSCILLATING	CA24OSC-C + CFWB
CA30WOSC-C	WALL FANS - OSCILLATING	CA30OSC-C + CFWB
CA24W-C	WALL FANS - NON-OSCILLATING	CA24-C + CFWB
CA30W-C	WALL FANS - NON-OSCILLATING	CA30-C + CFWB

PERFORMANCE DATA & SPECIFICATIONS

MODEL	FAN SIZE	DESCRIPTION	CFM	CFM / W	VOLT	AMPS	SHIPPING WEIGHT (LBS)
FAN HEAD ONLY							
CA24-C	24"	3 SPEED	8145 / 6795 / 5793	32.7 / 31.9 / 28.1	120	2.4	40
CA24OSC-C		3 SPEED OSCILLATING	8145 / 6795 / 5793	32.7 / 31.9 / 28.1	120	2.4	40
CA30-C	30"	3 SPEED	11100 / 9068 / 7658	44.0 / 42.9 / 37.1	120	2.5	50
CA30OSC-C		3 SPEED OSCILLATING	11100 / 9068 / 7658	44.0 / 42.9 / 37.1	120	2.5	50

VELOCITY MAPPING CHART

This chart indicates the air distribution pattern. It is a graphic illustration of air velocity in feet per minute.



MOUNTING ACCESSORIES

MODEL	DESCRIPTION	WEIGHT
CFKPB	KNOCK DOWN PEDESTAL BASE	36 lbs
CFWB	WALL BRACKET	6 lbs
CFCM	CEILING MOUNT (NON OSCILLATING FANS ONLY)	9 lbs



CANARM LTD. - Corporate Office
PO Box 367 2157 Parkedale Ave.,
Brockville, ON
Canada K6V 5V6
Tel: (613) 342-5424 Fax: 1-800-263-4598

Arthur Manufacturing Facility
#7686 Concession 16, RR 4
Arthur, ON
Canada N0G 1A0
Tel: (519) 848-3910 Fax: (519) 848-3948

Montréal Warehouse
2555 Rue Bernard Lefebvre
Laval, PC
Canada H7C 0A5
Tel: (450) 655-2535 Fax: (450) 665-0910

CANARM LTD. - USA Warehouse
808 Commerce Park Drive
Ogdensburg, New York,
USA 13669
Tel: 1-800-267-4427 Fax: 1-800-263-4598

PBKD/WMKD - COMMERCIAL CIRCULATING FANS



PBKD



WMKD

Canarm's high velocity commercial fans economically provide relief from summer heat by creating a gentle air movement. Pedestal type fans come with a sturdy base and adjustable pole. All fans have a 3 speed motor with industrial grade aluminum blades.

FEATURES

- Commercial duty circulating fans (Knock Down).
- Sturdy aluminum blades.
- Standard OSHA guard.
- 3 speed.
- 24" and 30" sizes.
- Motors have overload protection
- Packaged in one box, complete with mounting accessories.



PERFORMANCE DATA & SPECIFICATIONS

FAN SIZE	MODEL NUMBER & WEIGHT (LBS)				DESCRIPTION	HP	SUPPLY CFM	CFM / W
	PEDESTAL FAN	WEIGHT (LBS)	WALL MOUNT FAN	WEIGHT (LBS)				
24"	PBKD24-3SP	74	WMKD24-3SP	38	3 Speed	1/4	7805 / 7403 / 6774	43.2 / 41.7 / 36.2
24"	PBKD24-OSC	78	WMKD24-OSC	42	3 Speed Oscillating	1/4	7805 / 7403 / 6774	43.2 / 41.7 / 36.2
30"	PBKD30-3SP	80	WMKD30-3SP	46	3 Speed	1/4	10205 / 9855 / 9447	57.4 / 51.5 / 45.3
30"	PBKD30-OSC	84	WMKD30-OSC	49	3 Speed Oscillating	1/4	10205 / 9855 / 9447	57.4 / 51.5 / 45.3

CCU - COMMERCIAL CIRCULATING FANS



Canarm/LFI's high velocity commercial fans economically provide relief from summer heat by creating a gentle air movement. Pedestal type fans come with a sturdy base and adjustable pole. All fans have a 3 speed motor with industrial grade aluminum blades.

FEATURES

- Commercial duty circulating fans (Knock Down).
- 20" stationary models.
- Adjustable pedestal (54"-64").
- 3 speeds.
- Painted aluminum blades.
- Standard OSHA guard.
- Motors are thermally protected.
- Complete with 10', 120V grounded plug.
- 20" pedestal complete with wheel kit.



PERFORMANCE DATA & SPECIFICATIONS

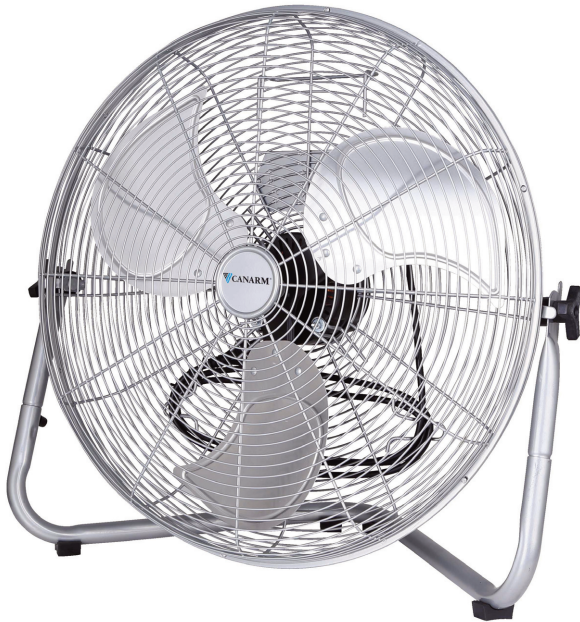
MODEL	FAN SIZE	DESCRIPTION	HP	SUPPLY CFM	CFM / W	WEIGHT (lbs)
CCUP20	20"	3 Speed Pedestal Fan	1/4	5513 / 4681 / 3918	28.0 / 27.3 / 25.2	47

EFFECTIVELY COOLS LARGE AREAS IN FACTORIES, STORES, OFFICES, RESTAURANTS AND MORE

Canarm/LFI's high velocity commercial fans economically provide relief from summer heat by creating a gentle air movement.

FEATURES

- Painted silver finish.
- 3 speed dial control.
- Sturdy aluminum blades.
- 12", 18" and 20" sizes available.
- Model HVF20G with 5'9" 120V grounded cord set.
- Models HVRA12 & HVF18L with 6' 120V cord with fuse (2 prong).
- Convenient carrying handle.
- Cord wrap on HVF20G model.
- Ergonomic tilt adjustment knobs.
- Complete with wall mount bracket.
- OSHA guard.
- Easy assembly - no tools required.



HVF18L & HVF20G

WALL MOUNT BRACKET ASSEMBLY



HVF12



HVRA12



HVRA12

PERFORMANCE DATA & SPECIFICATIONS

MODEL	HIGH SPEED						MEDIUM SPEED						LOW SPEED					
	CFM / CFM/W	AMPS	WATTS	RPM	DB(A)	VELOCITY @ 5ft (FT/MIN)	CFM / CFM/W	AMPS	WATTS	RPM	DB (A)	VELOCITY @ 5ft (FT/MIN)	CFM / CFM/W	AMPS	WATTS	RPM	DB(A)	VELOCITY @ 5ft (FT/MIN)
HVRA12	1,500	0.57	50	1450	48	284	1,200	0.52	42	1275	42	254	800	0.37	30	966	40	191
HVF18L	3,815	0.85	98	1530	58	586	2,828	0.76	80	1360	55	550	2,540	0.57	67	1120	50	480
HVF20G	5160 / 30.0	1.37	172	1332	62	866	4654 / 31.0	1.20	150	1187	57	782	4178 / 32.5	1.03	128	1050	53	675

MODEL	BLADE DIAMETER	DESCRIPTION	DIMENSIONS	H.P.	WEIGHT
HVRA12	12"	3 Speed Floor/Table Fan	15 3/4" W x 7 1/2" D x 15" H	1/10	11 lbs
HVF18L	18"	3 Speed Floor/Table Fan	20 5/8" W x 8 1/4" D x 20 1/10" H	1/16	12.3 lbs
HVF20G	20"	3 Speed Floor/Table Fan	23 3/4" W x 10 1/4" D x 23" H	1/4	24 lbs

ENERGY SAVINGS • COST EFFECTIVE • EFFICIENT

IDEALLY SUITED FOR CIRCULATING AIR IN INDUSTRIAL AND COMMERCIAL APPLICATIONS.



FEATURES

NEW DC MODELS

- Available with 48", 56" and 60" blade sweeps.
- Cutting Edge Technology DC motor.
- High Performance or High Performance Weather Proof.
- Up to 70% more energy efficient.
- 5 speed with forward and reverse.
- Extremely quiet.
- Extended motor life. 10 yr warranty.
- Faster startup, stop, change speeds and reversing.
- Easy to install, 50% less weight.
- Air Movement and energy consumption:
56" DC model 244 CFM/watt vs 106 CFM/watt AC model.

In winter, ceiling fans are used to destratify hot air otherwise trapped at ceiling level (Hot air is moved back to floor level where it keeps employees warm and comfortable). This can result in savings of up to 30% on heating costs.

In summer, ceiling fans run at higher speeds creating an evaporative cooling effect, keeping employees cool, and productivity higher.

NRCAN AND DOE COMPLIANT FOR CANADA AND THE USA.

DC vs AC FANS

DC fans are highly energy efficient, up to 70% more energy efficient than AC fans. The initial cost is higher than comparable AC fans but the efficiency of DC fans recovers the cost over time on your energy bill. You will see the best returns in locations with high electricity rates.

You can expect less noise and more speed control with a DC fan. DC fans are extremely quiet, even at low speeds. With the extra control over the fan's speed you can manage airflow better, further reduce power consumption and increase life expectancy of DC fans by not being forced into a fixed higher speed to meet your airflow needs.

DC motors require minimal maintenance and produce less heat compared to AC motors, increasing the lifespan of the fan. Parts can be more expensive for a DC motor however, that is why we back up our motors with a 10 year warranty so you can feel confident in your investment.



CONTROL

RREM-DCQ014-W

- Wall mount speed control for DC motors only.
- Controls up to 5 DC fans.
- ON/OFF, 5-speed forward & reverse.

IMPORTANT NOTICE:

In order to operate, DC industrial fans MUST be installed with our RREM-DCQ014-W wall control. DC fans not for use with MC controls.

PERFORMANCE DATA & SPECIFICATIONS

MODEL NUMBER	COLOUR	FAN SIZE	CFM	VOLTAGE	AMPS	CFM/W	FORWARD & REVERSE	DOWNROD LENGTH	SHIPPING WEIGHT (LBS)
CP48D11N	WHITE	48"	7370	120	0.6	211	YES	16"	17
CP56D11PN (c/w cord + plug)	WHITE	56"	8449	120	0.6	244	YES	16"	18.5
CP56D11N	WHITE	56"	8449	120	0.6	244	YES	16"	18.5
CP56D10N	BLACK	56"	8449	120	0.6	244	YES	16"	18.5
CP56D1136N	WHITE	56"	8449	120	0.6	244	YES	36"	22

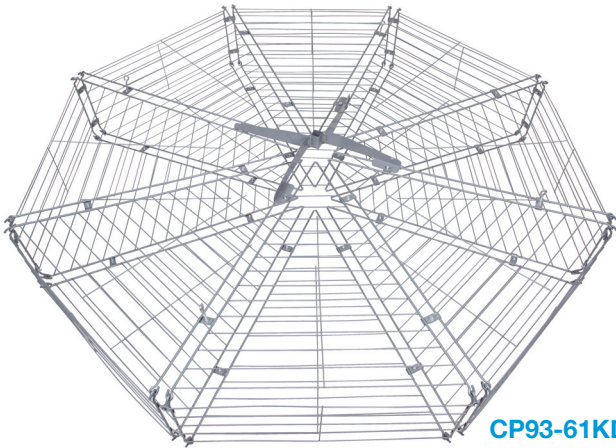
HIGH PERFORMANCE, WEATHER PROOF, WATER RESISTANT MODELS

Equipped with rubber gaskets & stainless screws. Ideally suited for agricultural buildings.

MODEL NUMBER	COLOUR	FAN SIZE	CFM	VOLTAGE	AMPS	CFM/W	FORWARD & REVERSE	DOWNROD LENGTH	SHIPPING WEIGHT (LBS)
CP48DW11N	WHITE	48"	7370	120	0.6	211	YES	16"	17
CP56DW11N	WHITE	56"	8449	120	0.6	244	YES	16"	18.5
CP60DW11N	WHITE	60"	8944	120	0.6	259	YES	16"	18.5

INDUSTRIAL FAN GUARD

GREAT FOR FACTORIES, FARMS, SCHOOLS AND WAREHOUSES



CP93-61KD

FEATURES

- 61" W x 26" H
- Knockdown construction.
- Installs in minutes.
- Use with Canarm 48", & 56" ceiling fans.
- Painted grey finish.
- Shipping weight - 21 lbs.

DOWNRODS & MOUNTING KIT



DCR3610



DCR0811



DCR3611

MODEL	DESCRIPTION
DCR0811	8" Downrod for Industrial Ceiling Fans White, complete with lead wire and safety cable
DCR3611	36" Downrod for Industrial Ceiling Fans White, complete with lead wire and safety cable
DCR3610	36" Downrod for Industrial Ceiling Fans Black, complete with lead wire and safety cable
DCR08WR11	8" Downrod for Industrial Ceiling Fans White, water resistant, complete with lead wire and safety cable
DCR36WR11	36" Downrod for Industrial Ceiling Fans White, water resistant, complete with lead wire and safety cable
DCR36WR10	36" Downrod for Industrial Ceiling Fans Black, water resistant, complete with lead wire and safety cable
CP99	Angular Mounting Kit

CONTROL



RREM-DCQ014-W

- Wall mount speed control for DC motors only.
- Controls up to 5 DC fans.
- ON/OFF, 5-speed forward & reverse.

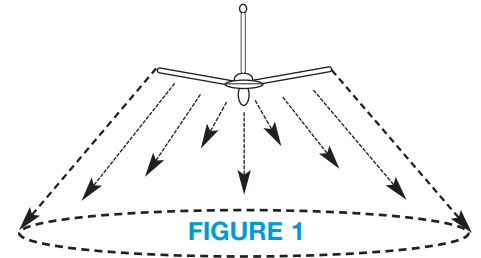
IMPORTANT NOTICE:

In order to operate, DC industrial fans MUST be installed with our RREM-DCQ014-W wall control. DC fans not for use with MC controls.

HOW TO CHOOSE A FAN

Ceiling fan choice and layout is based on ceiling height and the floor area of the building. As the height of the ceiling increases, larger and more powerful fans are required to achieve destratification.

The floor air coverage of a fan will be greater the higher the ceiling of the building. This is because of the natural cone shape of the air pattern produced by the fan. (See Figure 1)



Canarm provides two types of fans:

- The traditional ceiling fan, low cost, good performance, great for dry locations.
- The high performance, water resistant models - great for more demanding applications with high moisture or greater air velocity requirements.

Use the following chart to choose the correct fan size/type and quantity to suit your requirements.

See the example below.

CEILING HEIGHT	SUGGESTED FAN SIZE	FAN FLOOR AREA COVERAGE (SQ. Feet)
12' - 13'	48"	950
14' - 15'		1150
16' - 17'	56"	1400
18' - 19'		1600
20' - 21'		1800
22' - 25'	60"	2250
26' - 30'		2700

EXAMPLE:

What size & how many fans would be required for a building that is 100 feet wide x 250 feet long & has as ceiling height of 16 feet?

- By using the chart above, we see that a ceiling height of 16 feet requires a 56" fan.
- Floor Area of the building = 100 feet wide x 250 feet long = 25,000 square feet.
- From the chart, we know that the Fan Floor Area Coverage of the 56" model is 1400 square feet at a 16 foot ceiling height.
- Therefore, the number of fans required = Floor Area of building / Fan Floor Area Coverage:
25,000 square feet / 1400 square feet = 18 fans.

A typical layout for this building is illustrated below.

An additional fan should be used about 10 feet in front of each shipping door to act as an air curtain & reduce heating bills in the winter.

