

BACK DRAFT DAMPERS

- Fits the outlet of all 200, 400, 600, 9200 and BI Series Utility Blowers.
- Constructed of 16 ga. aluminum.
- Gravity activated.
- Easily field installed.

INLET SCREENS

- Fits all single inlet 400, 600 and BI Series Utility Blowers.
- Round inlet screens mount on the inlet collars of the blowers.
- Easily field installed.

OUTLET SCREENS

- Fits all single inlet 400, 600 and BI Series Utility Blowers.
- Rectangular outlet screens mount over the square outlet of the units.
- Easily field installed.

BOLTED CLEAN OUT DOOR

- Allows easy access for inspection and cleaning of the wheel & housing.
- A tight pattern of bolts holds the gasketed door in place on the curved face of the scroll shaped wheel housing.

HEAT SLINGER

- Cast aluminum disk with radial blades, split for easy field installation on the shaft between the housing and the inboard bearing.
- Can be used on Canarm/Delhi's BI/600 units.
- Provides protection for the bearing from excessive heat. The slinger dissipates heat from the shaft before reaching the bearing and increases the air flow across the inboard bearings.
- Good for a maximum of 400° Fahrenheit air stream temperature.

V CAP

- For BI upblast utility sets to reduce rain and snow entry.
- Easily field installed above the blower outlet.

DRAIN FITTING

- Large, 2" diameter threaded pipe fitting resists clogging.
- Can be connected to a drainage system if desired.
- Factory welded in place, prior to painting.

SHAFT SEAL

- Good for a maximum of 220° Fahrenheit.
- Prevents migration of fumes, grease vapors, dust etc from the airstream into the compartment housing motors, drives and bearings.
- Can be used on Canarm/Delhi's BI/600 Utility units.
- Easily field installed.
- Installed on the shaft between the bearing plate and back panel in the motor compartment.
- Constructed of 1/4" thick polyethylene for a good seal and resistance to many substances.

VIBRATION ISOLATORS RUBBER

- Reduces vibration transmission to floors or roof surfaces.
- Suitable for indoor and outdoor use.

VIBRATION ISOLATORS SPRING

- Reduces vibration transmission to floors or roof surfaces.
- Suitable for indoor use only.

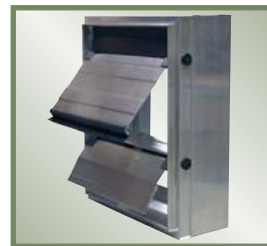
VIBRATION ISOLATORS OUTDOOR SPRING

- Reduces vibration transmission to floors or roof surfaces.
- Designed for outdoor use. Housed to resist lateral motion from winds.

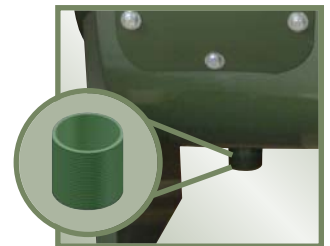
ALUMINUM WHEEL

- For use with the BI & BI-RM series units.
- AMCA type B classification for spark resistant construction

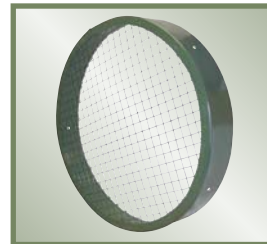
OPTIONS & ACCESSORIES



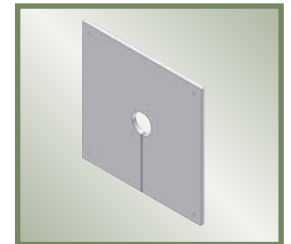
BACK DRAFT DAMPER



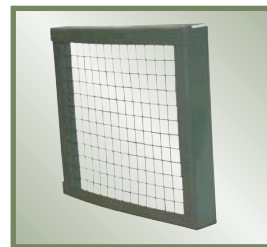
DRAIN FITTING



INLET SCREEN



SHAFT SEAL



OUTLET SCREEN



VIBRATION ISOLATORS RUBBER



BOLTED CLEAN OUT DOOR



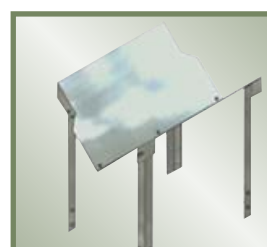
VIBRATION ISOLATORS SPRING



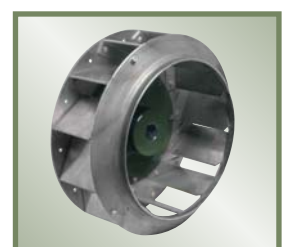
HEAT SLINGER



VIBRATION ISOLATORS OUTDOOR SPRING



V CAP



ALUMINUM WHEEL