

FEATURES

- Surface lets manure pass through easily, remaining clean and comfortable for your birds.
- Anti-slip surface.
- Manufactured of polypropylene, making the slat extremely resistant to wear, differences in temperature and chemical agents.
- No tools required.
- Interlocking 2' x 3' (609 mm x 914 mm) slats make installation and removal very easy work.



TECHNICAL CHARACTERISTICS

- Material: Polypropylene.
- Unitary Weight: Approximately 6.615 lbs. (3000g).
- Treading Surface: 60%.
- Colour: Available in Grey or Black.

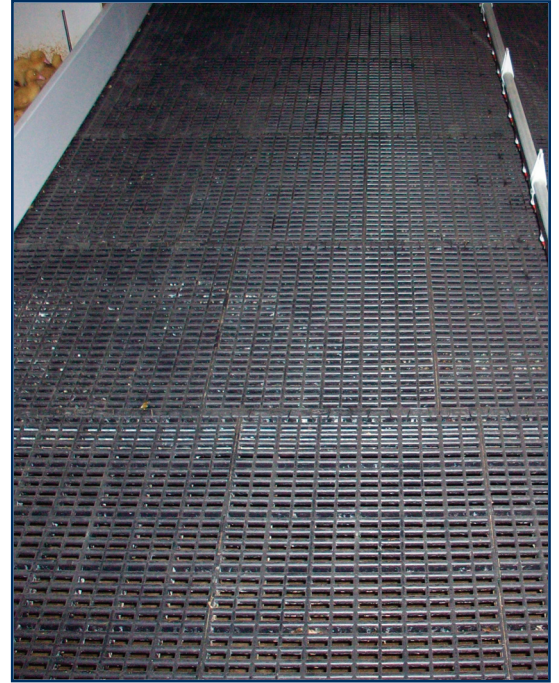
NOTE: Poultry flooring is designed to support the weight of chickens. Workers should walk only on supported areas of flooring.

CANARM LTD. - Corporate Office
PO Box 367 2157 Parkedale Ave.,
Brockville, ON
Canada K6V 5V6
Tel: (613) 342-5424 Fax: 1-800-263-4598

Arthur Manufacturing Facility
#7686 Concession 16, RR 4
Arthur, ON
Canada N0G 1A0
Tel: (519) 848-3910 Fax: (519) 848-3948

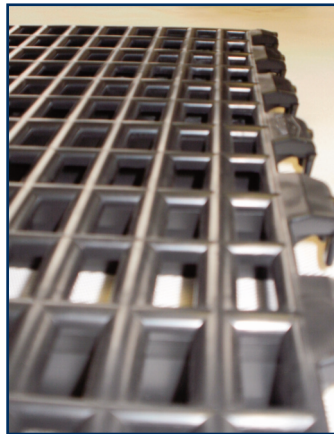
Montréal Warehouse
2555 Rue Bernard Lefebvre
Laval, QC
Canada H7C 0A5
Tel: (450) 655-2535 Fax: (450) 665-0910

CANARM LTD. - USA Warehouse
808 Commerce Park Drive
Ogdensburg, New York,
USA 13669
Tel: 1-800-267-4427 Fax: 1-800-263-4598



FEATURES

- Interlocking 24" OC x 18" lg (609 mm x 457 mm) slats make installation and removal very easy work.
- Rounded top.
- Surface lets manure pass through to keep birds clean.
- Manufactured of polypropylene, making the slat extremely resistant to wear, differences in temperature and chemical agents.
- Easy to clean.



TECHNICAL CHARACTERISTICS

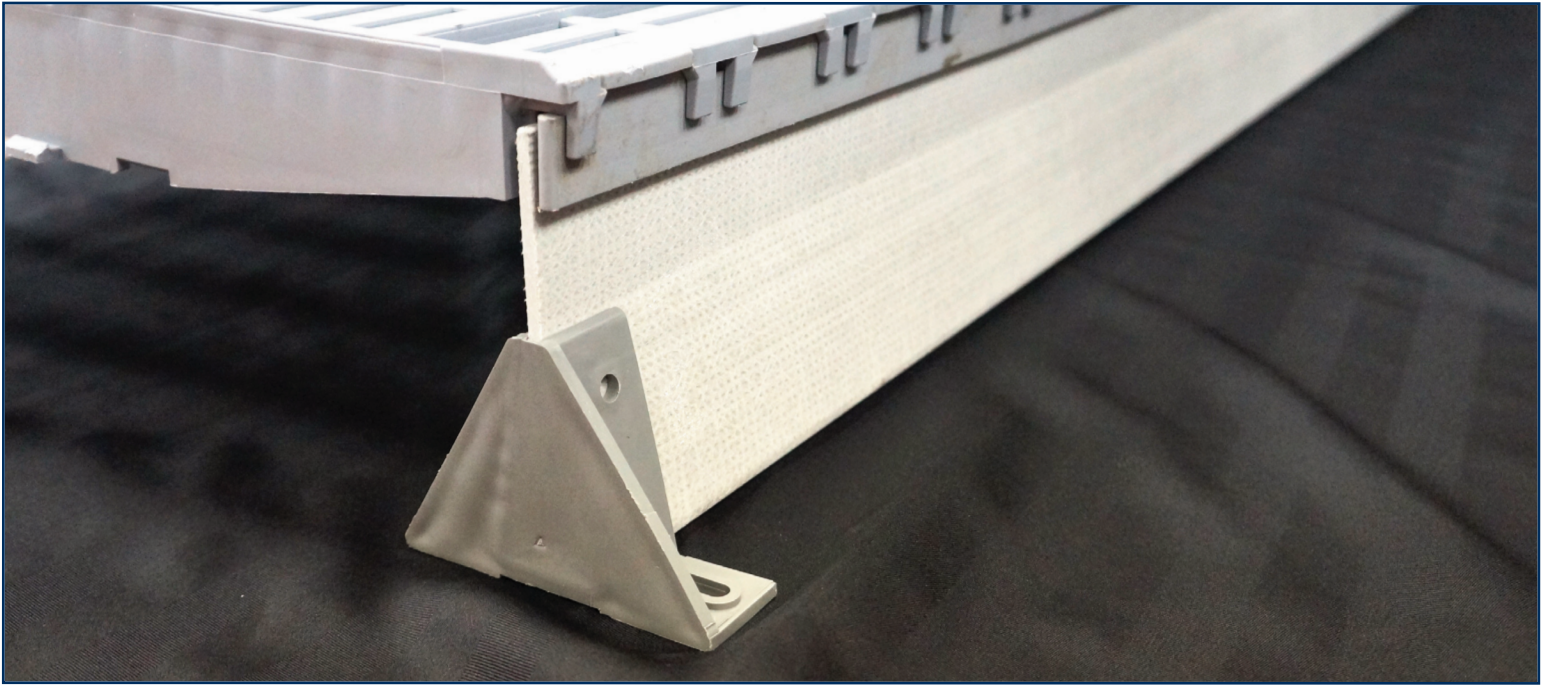
- Size installed: 24"OC x 18" lg (609 mm x 457 mm).
- Colour: Available in Black.
- Unitary Weight: Approximately 5.45 lbs. (2472g).
- Material: Polypropylene.
- 300 slots per pc, 40% opening.
- Slot .4766" x 1.188" (12 mm x 30 mm).

CANARM LTD. - Corporate Office
PO Box 367 2157 Parkedale Ave.,
Brockville, ON
Canada K6V 5V6
Tel: (613) 342-5424 Fax: 1-800-263-4598

Arthur Manufacturing Facility
#7686 Concession 16, RR 4
Arthur, ON
Canada N0G 1A0
Tel: (519) 848-3910 Fax: (519) 848-3948

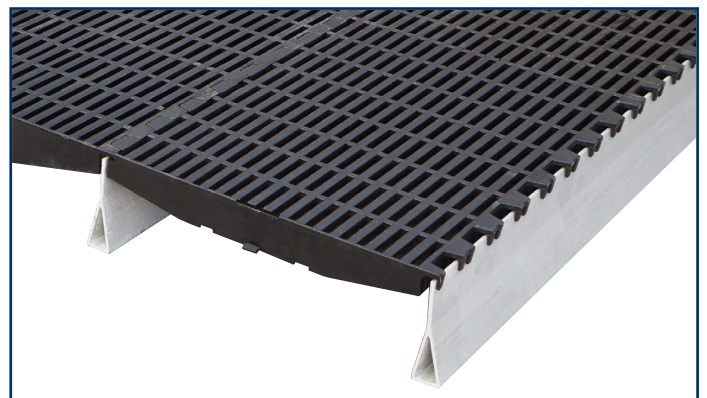
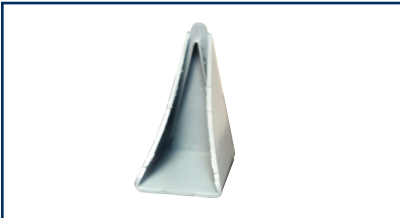
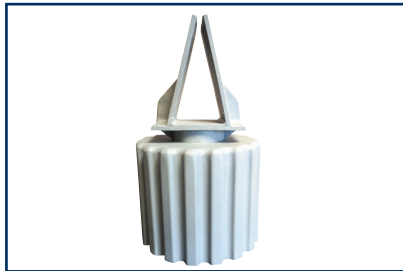
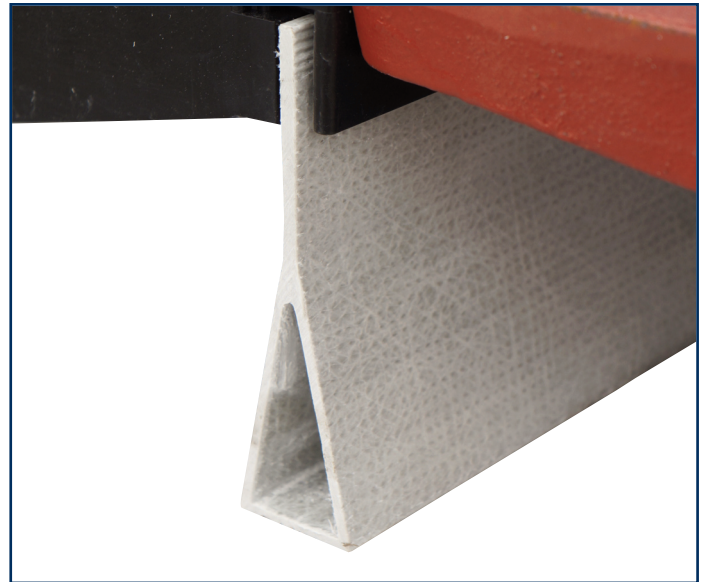
Montréal Warehouse
2555 Rue Bernard Lefebvre
Laval, PC
Canada H7C 0A5
Tel: (450) 655-2535 Fax: (450) 665-0910

CANARM LTD. - USA Warehouse
808 Commerce Park Drive
Ogdensburg, New York,
USA 13669
Tel: 1-800-267-4427 Fax: 1-800-263-4598



FEATURES

- Heavy duty “adjustable” post support system.
- Triangular shaped, heavy duty plastic end bracket enhances stability and protects the beam from the concrete.
- Corrosion resistant fiberglass rail provides an excellent alternative to stainless steel.
- Rail is 5 5/16” high for added strength.
- Light weight and strong.
- Easy to install.
- 3/16” rail can be used with all Canarm flooring.



ACCESSORIES

- Post
- End Caps

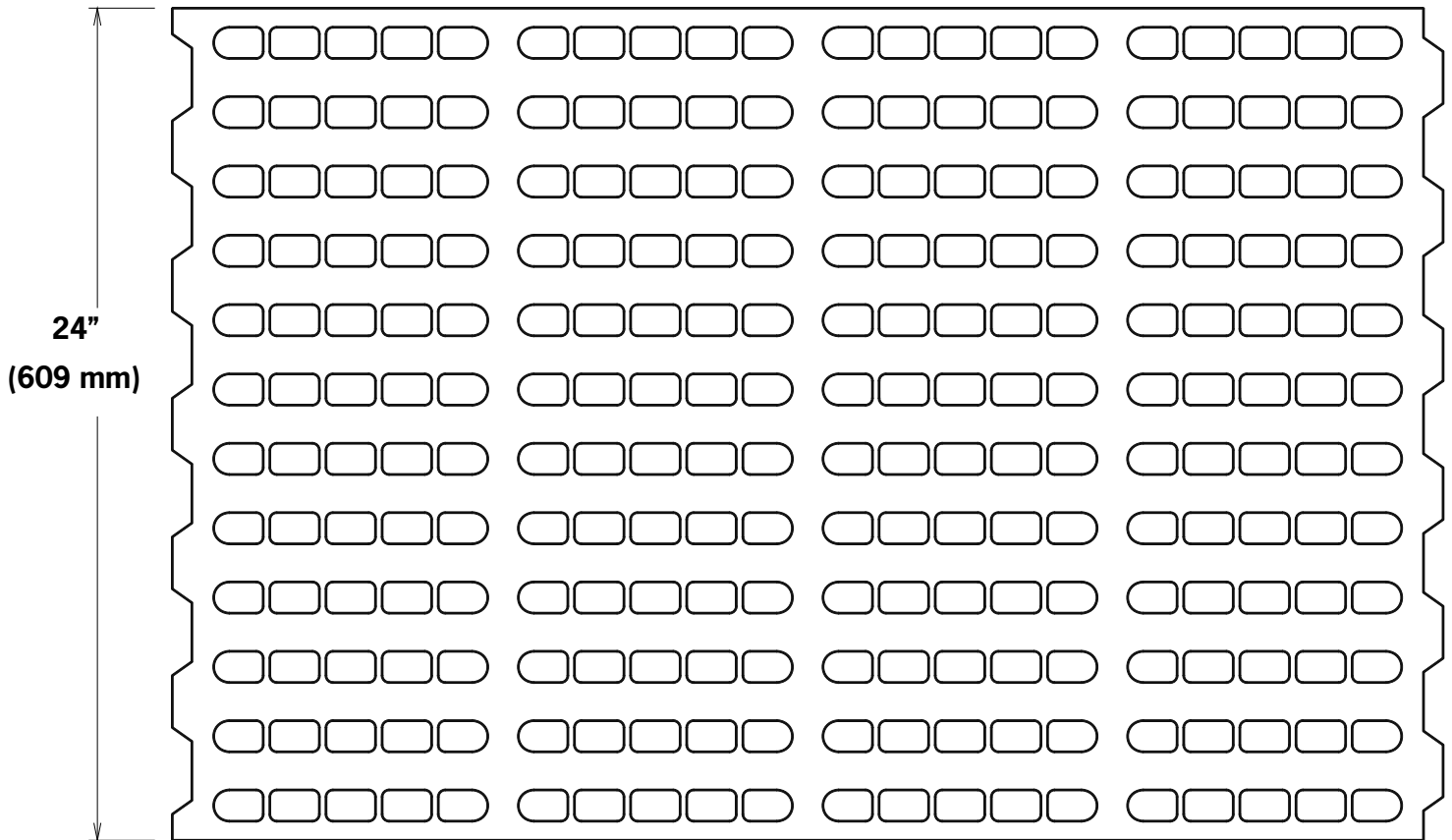
CANARM LTD. - Corporate Office
PO Box 367 2157 Parkedale Ave.,
Brockville, ON
Canada K6V 5V6
Tel: (613) 342-5424 Fax: 1-800-263-4598

Arthur Manufacturing Facility
#7686 Concession 16, RR 4
Arthur, ON
Canada N0G 1A0
Tel: (519) 848-3910 Fax: (519) 848-3948

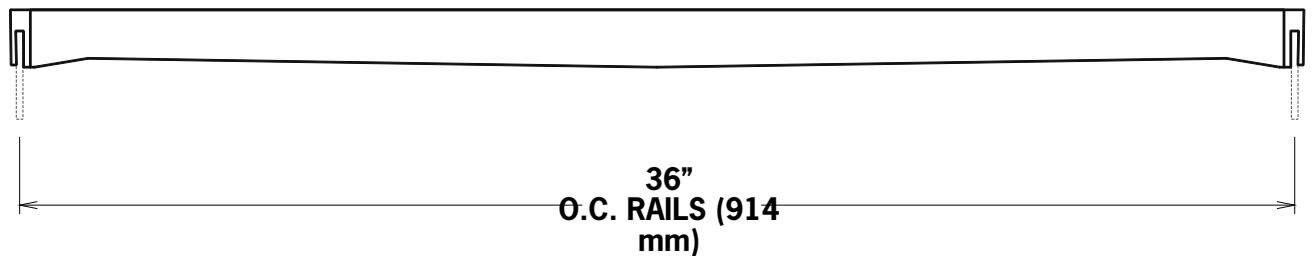
Montréal Warehouse
2555 Rue Bernard Lefebvre
Laval, PC
Canada H7C 0A5
Tel: (450) 655-2535 Fax: (450) 665-0910

CANARM LTD. - USA Warehouse
808 Commerce Park Drive
Ogdensburg, New York,
USA 13669
Tel: 1-800-267-4427 Fax: 1-800-263-4598

2099540
36" O.C. X 24" LG. (914 mm x 609 mm)

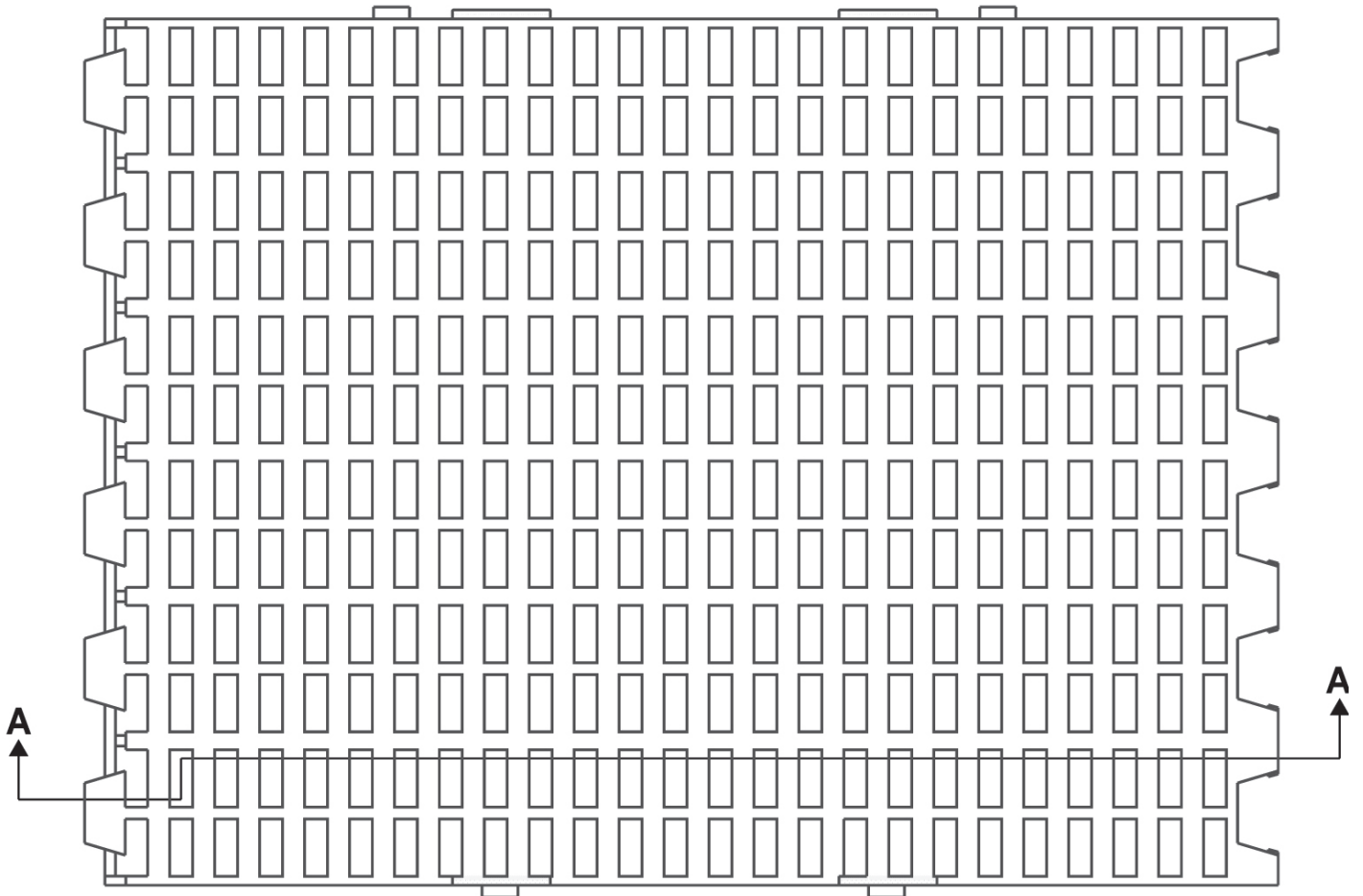


RIGHT END VIEW

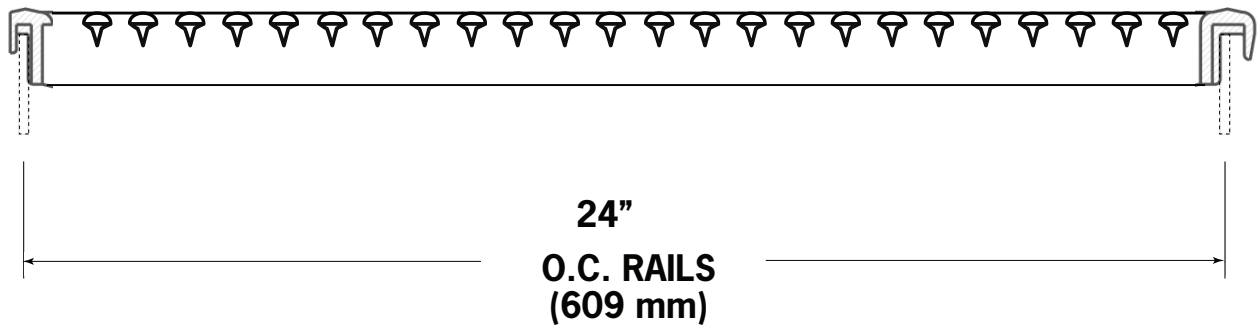


- Size installed (36" O.C.)(24" LG.) (914 mm)(609 mm).
- % Open (240 Slots @ .900" x 1.423"), therefore 36% open (240 slots @ 23 mm x 36 mm).
- Top of support to top of floor = .600" (1524 mm) (Overall height = 1.625") (41 mm).
- Therefore minimum support height = 2" (51 mm).

2099400
24" O.C. X 18" LG. (609 mm x 457 mm)



SECTION AA



- Size installed (24" O.C.)(18" LG.) (609 mm)(457 mm).
- % Open (300 Slots @ .4766" x 1.1875"), therefore 40% open (300 slots @ 12 mm x 30 mm).
- Top of support to top of floor = 7/16" (11 mm).

INSTALLATION GUIDELINES - Any deviation from these guidelines must be approved by the Canarm Customer Service and Engineering Departments

Plastic flooring systems will expand and contract with temperature change. Expansion gap guidelines must be followed. The flooring guidelines below must be followed to ensure warranty. Livestock Flooring products are designed to carry normal livestock loads and densities. They are not designed to be work-platforms for construction and contractor operations. Care should be taken to avoid sudden impacts and point loads, such as ladders, during the installation process. Care should also be taken to walk on the top of the support rails or beams.

1. Store all flooring parts inside and at 70°F/20°C for at least 48 hours before installation. Never install flooring that has not been properly warmed.
2. Use only Canarm supplied support system and installation guidelines. Any deviation from this should be discussed with and approved by our customer service and engineering departments. Using rails thicker than 3/16" (4.75 mm) will result in damage to the floor and possible failure.
3. Leave room for expansion at walls, and an expansion joint in floor runs of over 60 feet (18 meters). (Refer to the Thermal Expansion chart on next page for guidelines.)
4. Some floor designs allow for staggered joints. This is recommended for maximum strength and stability.
5. All expansion gaps should be covered with a "cove" that will allow expansion and contraction of the floor.
6. Avoid hammering on the flooring and only use a soft rubber mallet when necessary.
7. Support rails and beams must be installed straight and plumb.
8. Minimum of 2" (50.8 mm) of rail should be supported on curbs, and rail should be long enough to prevent linear shifting off the curb.
9. Rails should not be fastened to the curb, as the flooring system must be allowed to expand, contract and "float" when necessary.

SPAN WIDTH AND RAIL HEIGHT REQUIREMENTS

- All steel rails must be 3/16" (4.75 mm) thick.
- Up to 96" (2438 mm) long and 3" (76 mm) high.
- 96" (2438 mm) - 120" (3048 mm) long and 3.5" (88.9 mm) high
- For rails over 120" (3048 mm) long, please call for center support recommendations.

THERMAL EXPANSION

Whenever possible, always install flooring at the room operating temperature.

If installing below the operating temperature, use the Thermal Expansion chart on next page to calculate the expansion gap to be used between walls and flooring.

If the floor is longer than 60 feet (18 meters), an expansion joint is needed. To make an expansion joint, use two support beams side by side and leave a gap between floor parts (proper expansion gap can be calculated by referring to the Thermal Expansion chart and then doubling the value).

THERMAL EXPANSION GAP

The gap distance depends on the floor length, and the installation temperature vs. room operating temperature.

THERMAL EXPANSION CHART

LENGTH/WIDTH OF FLOORING SECTION		INSTALLATION - DEGREES BELOW OPERATING TEMPERATURE		EXPANSION GAP TO LEAVE AT EDGES OF FLOOR SECTION (DOUBLE BETWEEN FLOOR SECTIONS)		
FEET	METRES	FAHRENHEIT	CELCIUS	INCHES	INCHES	MILLIMETRES
10'	3m	0	0	0.1250	1/8"	3mm
10'	3m	10	6	0.1563	5/32"	4mm
10'	3m	20	11	0.1875	3/16"	5mm
10'	3m	30	17	0.2500	1/4"	6mm
10'	3m	40	22	0.3125	5/16"	8mm
20'	6m	0	0	0.1875	3/16"	5mm
20'	6m	10	6	0.3125	5/16"	8mm
20'	6m	20	11	0.3750	3/8"	10mm
20'	6m	30	17	0.5000	1/2"	13mm
20'	6m	40	22	0.6250	5/8"	16mm
30'	9m	0	0	0.2500	1/4"	6mm
30'	9m	10	6	0.4688	15/32"	12mm
30'	9m	20	11	0.5625	9/16"	14mm
30'	9m	30	17	0.7500	3/4"	19mm
30'	9m	40	22	0.9375	15/16"	24mm
40'	12m	0	0	0.3750	3/8"	10mm
40'	12m	10	6	0.6250	5/8"	16mm
40'	12m	20	11	0.7500	3/4"	19mm
40'	12m	30	17	1.0000	1"	25mm
40'	12m	40	22	1.2500	1-1/4"	32mm
50'	15m	0	0	0.5000	1/2"	13mm
50'	15m	10	6	0.7813	25/32"	20mm
50'	15m	20	11	0.9375	15/16"	24mm
50'	15m	30	17	1.2500	1-1/4"	32mm
50'	15m	40	22	1.5625	1-9/16"	40mm
60'	18m	0	0	0.6250	5/8"	16mm
60'	18m	10	6	0.9375	15/16"	24mm
60'	18m	20	11	1.1250	1-1/8"	29mm
60'	18m	30	17	1.5000	1-1/2"	38mm
60'	18m	40	22	1.8750	1-7/8"	48mm