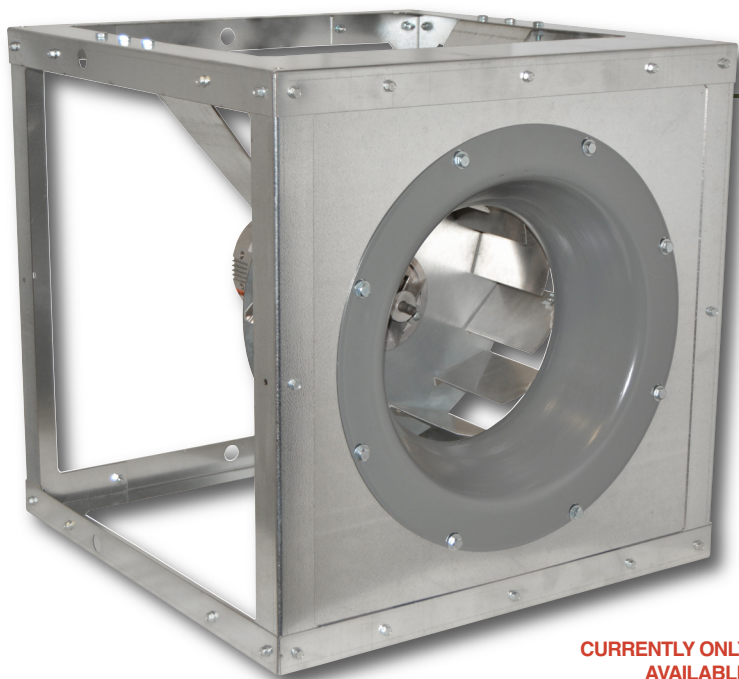


PMD SERIES

Backward Inclined Direct Drive Plenum Fan



*NON ETL MODEL

CURRENTLY ONLY
AVAILABLE
IN CANADA



FEATURES

- Available in 10", 12", 13", 15", 16" & 18"
- High efficiency aluminum wheel
- Junction box
- High Efficiency EC Motor
- 0-10VDC onboard potentiometer
- LED display for RPM and percent of demand
- 120/208-230 V 1Ø
- No separate transformer
- 300 RPM minimum
- Flexible user interface
- Ideally suited for plenum arrays

PERFORMANCE SPECIFICATIONS

MODEL	TYPICAL MAXIMUM CFM @ SP					
	1/2" SP	1" SP	1 1/2" SP	2" SP	MAX HP	RPM
PMD105	870	390	--	--	1/2 HP	1800
PMD120	1630	1220	--	--	1/2 HP	1800
PMD135	2280	1800	1120	--	1/2 HP	1800
PMD150	3060	2680	2170	1400	1 HP	1800
PMD165	TBA	TBA	TBA	TBA	1 HP	1500
PMD180	TBA	TBA	TBA	TBA	1 HP	1200

Power rating (BHP) does not include transmission losses. Performance certified is for installation type B - Free inlet, Ducted Outlet. Performance ratings do not include the effects of appurtenances (accessories).

CFM values listed above are summarized for convenience.

FOR FAN CURVES & FULL PERFORMANCE DATA, CONSULT OUR DELAIR SOFTWARE.
 DOWNLOAD DELAIR @ WWW.CANARM.COM/DELAIR

DIMENSIONS

MODEL	DIMENSIONS (IN)			
	L	W	H	A
PMD105	16	16	16	14 13/16
PMD120	20	20	20	18 13/16
PMD135	22	22	22	20 13/16
PMD150	24 1/2	24 1/2	24 1/2	23 1/4
PMD165	26	26	26	24 3/4
PMD180	28 5/8	25 5/8	28 5/8	27 3/8

