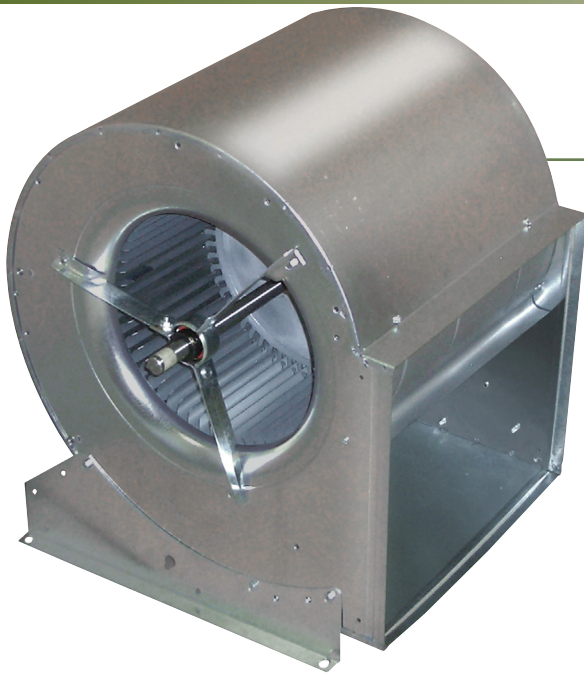


# G SERIES

## Double Inlet Belt Drive Blowers



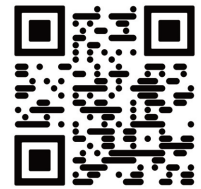
### PERFORMANCE SPECIFICATIONS

MODEL	TYPICAL MAXIMUM CFM @ SP									
	1/2" SP		1" SP		1 1/2" SP		2" SP		2 1/2" SP	
	CFM	FEI	CFM	FEI	CFM	FEI	CFM	FEI	CFM	FEI
G7-5	1600	0.49	1500	0.56	1400	0.62	1400	0.66	1300	0.74
G7	2200	0.65	2100	0.73	2000	0.80	1900	0.85	1800	0.90
G9-7	2700	0.78	2600	0.88	2500	0.97	2400	1.05	2200	1.11
G9	3200	0.78	3000	0.91	2800	1.00	2600	1.04	2300	1.07
G10-8	3200	0.81	3100	0.93	2900	1.02	2700	1.10	2400	1.13
G10	3700	0.85	3500	0.97	3300	1.07	3000	1.13	2700	1.18
G12-9	4300	0.98	3900	1.10	3600	1.16	3200	1.20	2900	1.25
G12	4600	0.90	4300	1.05	3800	1.16	3400	1.20	2900	1.19
G15-10	4900	0.93	4600	1.11	4200	1.24	3700	1.30	3100	1.23
G15	6900	0.95	6400	1.07	5800	1.16	5200	1.24	4600	1.24
G18-13	8800	0.82	8300	0.92	7900	1.06	7400	1.13	6800	1.17
G18	8700	1.06	7700	1.17	6900	1.27	5800	1.26	3600	0.94

FOR FAN CURVES & FULL PERFORMANCE DATA, CONSULT OUR DELAIR SOFTWARE.  
DOWNLOAD DELAIR @ [WWW.CANARM.COM/DELAIR](http://WWW.CANARM.COM/DELAIR)

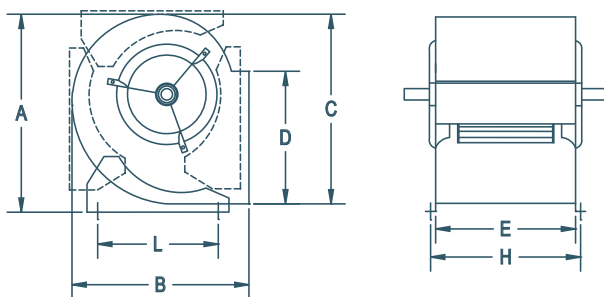
### FEATURES

- Sleeve or ball bearing models available.
- Base feet can be mounted for various discharge positions.
- Motor mounting hardware included with each blower.
- Corrosion resistant G90 galvanized steel blower housing.
- Capacity range 200 to 8000 CFM.
- The blower wheel has an exclusive centre disc which allows blowers to be used safely at speeds well above any normal requirement.
- Blower housings have extruded holes to give greater holding power for mounting base sides and motor bracket.
- Matte finish zinc coated wheel and cut-off baffle.
- Shaft dimensions and finish are carefully controlled to ensure quiet, trouble free operation.
- Available with permanently lubricated sleeve bearings suitable for operation in ambient temperatures of +30 to +120 deg. F and under 1000 RPM OR ball bearings with a sealed lifetime supply of lubricant for operation in ambient temperatures of -65 to +250 deg. F (optional).
- Shafts for ball bearing models have keywayed ends. Sleeve bearing model shafts have flats.

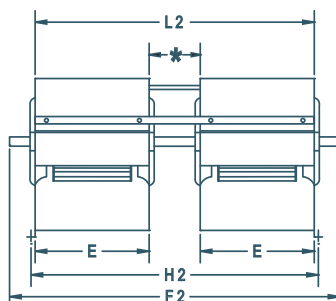


View FEI charts  
[canarm.com/fei-g](http://canarm.com/fei-g)

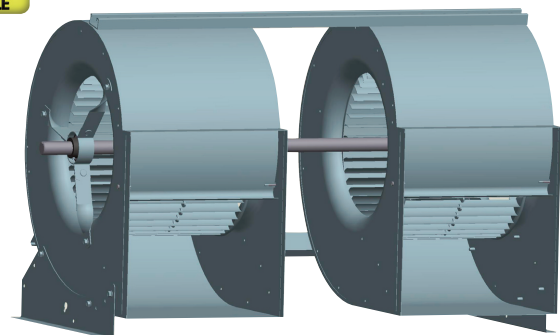
### DIMENSIONS



"G" Series Twin Units - \* Spacing will determine "L2" and "F2" dimensions.



Call for pricing & availability.



MODEL	A	B	C	D	E	H	L	SHAFT DIAMETER	WHEEL DIAMETER	WHEEL WIDTH	UNIT WEIGHT (LBS) (without motor & drives)
G7-5	14 5/16"	12 5/16"	12 11/16"	8 1/4"	6 7/8"	7 7/8"	9 5/8"	3/4"	8 1/16"	4 15/16"	13
G7	14 5/16"	12 5/16"	12 11/16"	8 1/4"	9 3/16"	10 3/16"	9 5/8"	3/4"	8 1/16"	7 3/16"	15
G9-7	16 15/16"	15 1/16"	15 9/16"	10 1/4"	9 3/16"	10 3/16"	11 3/4"	3/4"	10 1/4"	7 3/16"	19
G9	16 15/16"	15 1/16"	15 9/16"	10 1/4"	11 13/16"	12 13/16"	11 3/4"	3/4"	10 1/4"	9 9/16"	21
G10-8	19"	16 3/4"	17 3/8"	11 3/8"	10 1/2"	11 1/2"	13 3/8"	3/4"	11 1/8"	8 1/16"	23
G10	19"	16 3/4"	17 3/8"	11 3/8"	13 1/8"	14 1/8"	13 3/8"	3/4"	11 9/16"	10 13/16"	25
G12-9	22 1/8"	19 1/2"	20 5/8"	13 7/16"	12 1/4"	13 1/4"	16 1/8"	3/4"	12 7/8"	9 9/16"	29
G12	22 1/8"	19 1/2"	20 5/8"	13 7/16"	15 5/8"	16 5/8"	16 1/8"	3/4" or 1"	12 7/8"	12 13/16"	34
G15-10	25 3/4"	22 11/16"	24 1/4"	15 7/8"	14 11/16"	15 11/16"	19 1/2"	1"	15 1/2"	10 13/16"	48
G15	25 3/4"	22 11/16"	24 1/4"	15 7/8"	18 5/8"	19 5/8"	19 1/2"	1"	15 1/2"	15 1/16"	56
G18-13	30 1/2"	27"	29"	18 7/8"	17 3/8"	18 3/8"	24"	1"	18 1/2"	15 1/16"	67
G18	30 1/2"	27"	29"	18 7/8"	21 7/8"	22 7/8"	24"	1"	18 1/2"	18 1/2"	87