

# BI SERIES

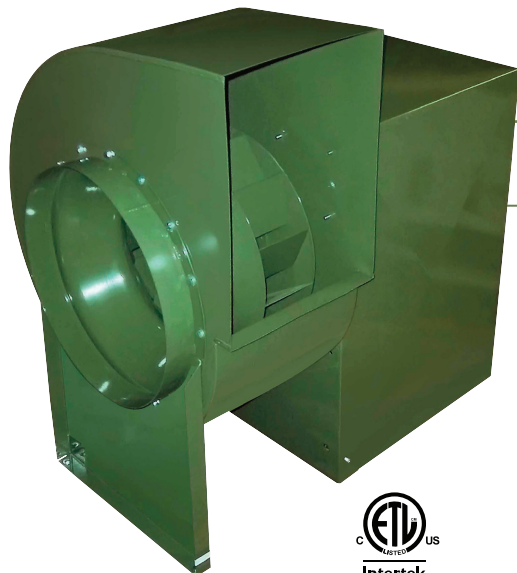
## Belt Drive Utility Blowers

### FEATURES

- Complete range of sizes from 10" to 36".
- Full AMCA Class 1 Operation.
- Non-overloading backward inclined (BI) welded wheels.
- Aluminum wheel - (AMCA type B classification for spark resistant construction) - available as an option.
- Aluminum wheels only on BI-30 to BI-36.
- Discharge position can be field rotated to any of 8 discharge positions.
- Counter clock wise rotation is standard. Clock wise available.
- Outlet flanges on models BI-24 to BI-36.
- Temperature Ratings - without a heat slinger 250° F with a heat slinger, steel wheel 400° F, aluminum wheel 300° F.
- Motor access from 3 sides.
- Sloped motor base for ease of motor installation.
- Vented motor and drive compartment cover, with handles, for safety & weather protection.
- 16 gauge or heavier blower housing.
- Heavy duty pillow block ball bearings.

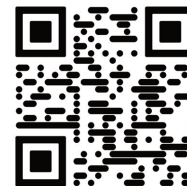


AVAILABLE WITH MOTORS & DRIVES FACTORY INSTALLED. CONSULT OUR DELAIR FAN SELECTION SOFTWARE FOR DETAILS.



### PERFORMANCE SPECIFICATIONS

MODEL	TYPICAL MAXIMUM CFM @ SP										Min HP	Max HP
	1" SP		2" SP		3" SP		4" SP		5" SP			
	CFM	FEI	CFM	FEI	CFM	FEI	CFM	FEI	CFM	FEI		
BI-10	2300	0.71	2100	0.87	1800	1.01	1600	1.07	1300	1.07	1/2	2
BI-12*	3000	0.73	2900	0.86	2600	1.00	2400	1.09	1900	1.13	-	3
BI-13	3900	0.75	3600	0.92	3300	1.04	2900	1.13	2400	1.19	1/2	5
BI-15*	4800	0.71	4400	0.89	4000	1.02	3600	1.11	3000	1.16	-	5
BI-16	5700	0.74	5300	0.92	4900	1.04	4300	1.12	3500	1.16	3/4	7 1/2
BI-18	6200	0.82	5400	0.95	4700	1.06	3500	1.11	-	-	3/4	7 1/2
BI-20	8400	0.80	7900	1.02	7200	1.14	6400	1.22	5300	1.24	1	7 1/2
BI-22*	10000	0.81	9100	0.89	8200	1.01	6900	1.07	-	-	-	10
BI-24	11200	0.86	10100	1.05	8800	1.17	6700	1.19	-	-	1 1/2	15
BI-27	15000	0.80	14100	0.96	12800	1.08	11200	1.16	8300	1.15	1 1/2	15
BI-30-AW	18700	0.75	17400	0.93	16100	1.05	14200	1.13	11900	1.16	2	15
BI-33-AW	22600	0.75	21000	0.93	19400	1.05	17100	1.13	14300	1.15	-	20
BI-36-AW	22900	0.87	22900	1.00	22900	1.06	20200	1.14	16500	1.15	3	25



View FEI charts  
[canarm.com/fei-bi](http://canarm.com/fei-bi)

Power rating (BHP) does not include transmission losses. Performance certified is for installation type B: Free inlet, Ducted outlet. Performance ratings do not include the effect of appurtenances (accessories).  
\*Special Order

FOR FAN CURVES & FULL PERFORMANCE DATA, CONSULT OUR DELAIR SOFTWARE. [WWW.CANARM.COM/DELAIR](http://WWW.CANARM.COM/DELAIR)



Canarm certifies that the BI Series shown herein are licensed to bear the AMCA Seal. The ratings shown are based on tests and procedures performed in accordance with AMCA Publication 211 and comply with the requirements of the AMCA Certified Ratings Programme.

The AMCA certified ratings seal applies to air performance only. The BI Series shown herein are not approved by AMCA for FEI ratings.



MOTOR AND DRIVE COMPARTMENT WITH COVER REMOVED TO ILLUSTRATE 3 SIDE MOTOR ACCESS AND SLOPED MOTOR BASE FOR BELT TENSIONING.

### RELATED MODEL

#### BI-RM & BI-RM-HS SERIES

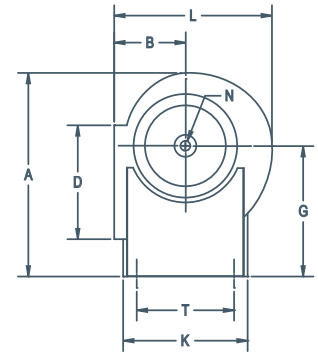
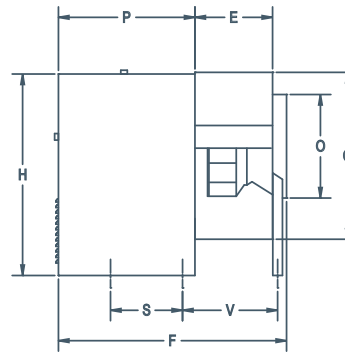
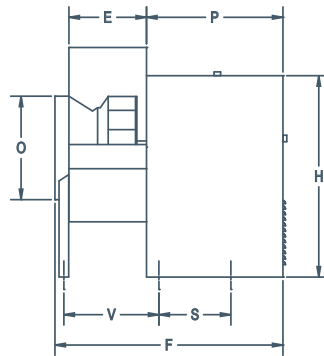
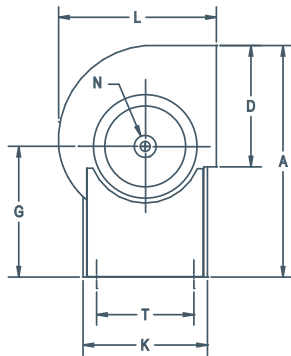
Belt Drive Utility Blowers.



# BI & BI-RM SERIES

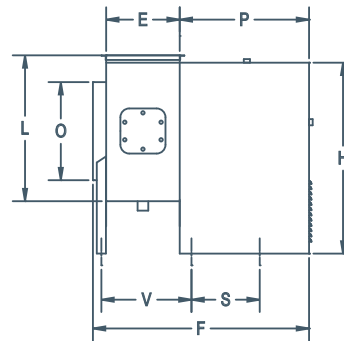
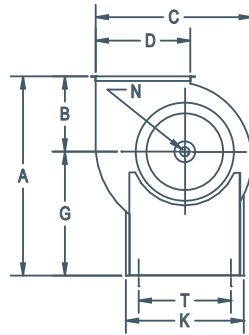
Belt Drive Utility Blowers

## DIMENSIONS



**MODELS BI-10 TO BI-27**  
(STANDARD TOP HORIZONTAL DISCHARGE)

**MODELS BI-30 TO BI-36**  
(STANDARD BOTTOM HORIZONTAL DISCHARGE)



**MODELS BI-RM(-HS)-10 TO BI-RM(-HS)-24**  
(UL 762 LISTED FOR REMOVAL OF COOKING VAPOURS)

MODEL	OUTLET																	SHAFT DIA.	INLET	WEIGHT (lbs) without motors
	A (STANDARD MODELS)	A (BI-RM MODELS)	B	C	D	E	F	G	H	K (CABINET WIDTH)	L	N	O	P	S	T	V			
BI-10	26 3/4"	23 5/8"	8 3/8"	19 3/16"	11 5/16"	8 1/4"	27 3/4" No Leg	15 5/6"	21 5/16"	13 1/4"	17 1/2"	3/4"	11"	17 1/4"	11 5/8"	11 1/4"	-	78		
BI-12	33 3/16"	30 3/16"	9 15/16"	27 7/16"	13 1/16"	9 7/8"	33 5/16"	20 3/16"	29 1/8"	16 3/4"	20 9/16"	1"	12 7/16"	21 3/16"	11 1/2"	14 3/4"	13 1/16"	112		
BI-13	34 1/2"	30 15/16"	10 3/4"	24 1/2"	14 3/8"	10 3/4"	34 1/4"	20 3/16"	29 1/8"	16 3/4"	22 7/16"	1"	14 3/8"	21 1/4"	11 1/2"	14 3/4"	14"	134		
BI-15	35 15/16"	31 15/16"	11 3/4"	27 1/4"	15 13/16"	12 3/4"	36 1/4"	20 3/16"	29 1/8"	16 3/4"	24 7/8"	1"	15 7/8"	21 3/16"	11 1/2"	14 3/4"	16"	140		
BI-16	39 7/16"	34 11/16"	12 11/16"	29 15/16"	17 1/2"	13 1/8"	36 5/8"	22"	30 15/16"	16 3/4"	26 15/16"	1 3/16"	17 3/8"	21 1/4"	11 1/2"	14 3/4"	16 1/2"	162		
BI-18	41 5/16"	35 7/8"	13 13/16"	33 3/16"	19 3/8"	14 1/2"	38 1/4"	22"	30 15/16"	16 3/4"	29 9/16"	1 3/16"	19 3/8"	21 1/2"	11 1/2"	14 3/4"	17 7/8"	172		
BI-20	49 3/16"	42 15/16"	14 15/16"	36 7/16"	21 3/16"	15 3/4"	46 3/8"	28"	40 15/16"	25 1/8"	32 3/16"	1 3/16"	21 1/4"	27 5/8"	14 9/16"	22 3/4"	19 3/4"	289		
BI-22	51 9/16"	44 3/8"	16 3/8"	40 7/16"	23 9/16"	17 3/4"	48 7/16"	28"	40 15/16"	25 1/8"	35 9/16"	1 3/16"	23 5/8"	27 5/8"	14 9/16"	22 3/4"	21 13/16"	322		
BI-24	58 3/16"	49 15/16"	17 15/16"	44 11/16"	26 1/8"	19 3/8"	51 5/16"	32 1/8"	46 11/16"	28 15/16"	39 1/8"	1 7/16"	26"	28 15/16"	18 5/16"	26 3/8"	23 3/8"	385		
BI-27	60 11/16"	51 1/2"	19 1/2"	49"	28 11/16"	21 1/4"	53 1/8"	32 1/8"	46 11/16"	28 15/16"	42 13/16"	1 7/16"	28 5/8"	28 7/8"	18 5/16"	26 3/8"	25 1/4"	411		
BI-30	65 15/16"	68 3/16"	24 7/8"	54 1/2"	31 7/8"	23 5/8"	58 5/8"	43 5/16"	65 5/16"	44 5/16"	50 15/16"	1 11/16"	31 3/4"	32"	17"	40"	29"	517		
BI-33	68 3/16"	68 5/8"	25 3/8"	58 15/16"	34 7/8"	25 15/16"	60 15/16"	43 5/16"	65 5/16"	44 5/16"	53 7/8"	1 11/16"	35"	32"	17"	40"	31 5/16"	607		
BI-36	70 7/8"	69"	25 1/2"	66 3/16"	38 9/16"	28 11/16"	63 11/16"	43 5/16"	65 5/16"	44 5/16"	56 15/16"	1 15/16"	38 3/4"	32"	17"	40"	34 1/16"	747		

## ACCESSORIES

- V-Cap
- Bolted Clean Out Door
- Heat Slinger
- Vibration Isolators

- Shaft Seal
- Corrosion Resistant Coating
- Aluminum Wheel
- Back Draft Dampers

- Inlet & Outlet Screens
- 2" Drain Fitting

For more information on accessories, see page C14.