



HOW IT WORKS

Fabricated from aluminum, these panels are light weight and offer a high quality appearance. Constructed of individual panels which attach together onto an external guide system. The panel tracking system ensures a smooth vertical 'open and close' operation over relatively large uninterrupted openings.

FEATURES

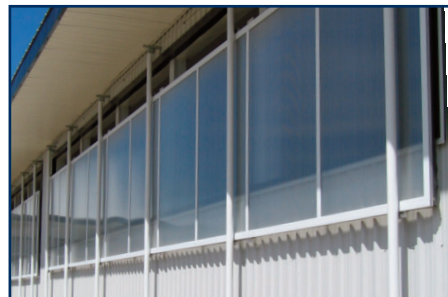
- Available in heights from 24" to 72".
- Aluminum frame with Lexan inserts.
- Optional pipe drive hardware.
- Can be operated manually or by automatic power drives connected to a thermostat.
- Feature a continuous rubber seal which allows for draft free closing of the pane and minimal heat loss in cold weather.

TECHNICAL DATA

SHEET THICKNESS	8 mm	
	5/16"	
Wall Type		Triple
Rib Spacing		0.3125
Standard Width		48" and 72"
Standard Length		Up to 39'
Light Transmission	Clear	75%
Solar Control G-Value	Clear	84%
Thermal Insulation	U-Factor	0.528
	R-Factor	1.89
Shading Coefficient	Clear	0.97

INDUSTRIES

- Dairy: parlours, holding areas and calf barns
- Swine



CANARM LTD. - Corporate Office
PO Box 367 2157 Parkedale Ave.,
Brockville, ON
Canada K6V 5V6
Tel: (613) 342-5424 Fax: 1-800-263-4598

Arthur Manufacturing Facility
#7686 Concession 16, RR 4
Arthur, ON
Canada N0G 1A0
Tel: (519) 848-3910 Fax: (519) 848-3948

Montréal Warehouse
2555 Rue Bernard Lefebvre
Laval, PC
Canada H7C 0A5
Tel: (450) 655-2535 Fax: (450) 665-0910

CANARM LTD. - USA Warehouse
808 Commerce Park Drive
Ogdensburg, New York,
USA 13669
Tel: 1-800-267-4427 Fax: 1-800-263-4598

www.canarm.com/faromor
Subject to Change without notice.

agsales@canarm.ca
Printed in Canada



HOW IT WORKS

ClearVu Panels offer the same high quality welded aluminum frame and operating hardware as the SolarVu Panels, but are glazed with a crystal clear acrylic sheet making it a popular choice for tie stall dairies, as well as parlours and holding areas.

FEATURES

- Available in heights from 24" to 72".
- Aluminum frame with clear acrylic inserts.
- Optional pipe drive operating hardware.
- Can be operated manually or by automatic power drives connected to a thermostat.
- All hardware is stainless steel, aluminum or galvanized for longer life expectancy.

INDUSTRIES

- Dairy
 - Tie Stall dairies
 - Parlours
 - Holding areas
- Equine



CANARM LTD. - Corporate Office
PO Box 367 2157 Parkedale Ave.,
Brockville, ON
Canada K6V 5V6
Tel: (613) 342-5424 Fax: 1-800-263-4598

Arthur Manufacturing Facility
#7686 Concession 16, RR 4
Arthur, ON
Canada N0G 1A0
Tel: (519) 848-3910 Fax: (519) 848-3948

Montréal Warehouse
2555 Rue Bernard Lefebvre
Laval, PC
Canada H7C 0A5
Tel: (450) 655-2535 Fax: (450) 665-0910

CANARM LTD. - USA Warehouse
808 Commerce Park Drive
Ogdensburg, New York,
USA 13669
Tel: 1-800-267-4427 Fax: 1-800-263-4598



HOW IT WORKS

These insulated wall panels are used in applications where heat loss and freezing concerns outweigh the benefits of natural light. Should natural light still be desired, these panels can be equipped with fixed thermal insert windows.

FEATURES

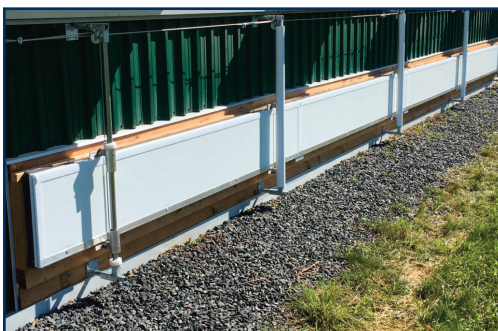
- Solid insulated panel.
- Operates vertically as a moveable ventilation wall.
- Available w/ thermal glass windows.
- Can be custom designed for organic poultry access openings.
- Can be operated manually or by automatic power drives connected to a thermostat.
- Optional pipe drive operating hardware.

INDUSTRIES

- Swine
- Dairy
 - Tie Stall dairies
 - Parlours
 - Holding areas
- Equine

MATERIAL

Pre-fabricated insulated (R=10) vent panel with white fiberglass skins and built in weather seals on top and bottom. Aluminum and PVC surround frame operating on external guide system.



CANARM LTD. - Corporate Office
PO Box 367 2157 Parkedale Ave.,
Brockville, ON
Canada K6V 5V6
Tel: (613) 342-5424 Fax: 1-800-263-4598

Arthur Manufacturing Facility
#7686 Concession 16, RR 4
Arthur, ON
Canada N0G 1A0
Tel: (519) 848-3910 Fax: (519) 848-3948

Montréal Warehouse
2555 Rue Bernard Lefebvre
Laval, PC
Canada H7C 0A5
Tel: (450) 655-2535 Fax: (450) 665-0910

CANARM LTD. - USA Warehouse
808 Commerce Park Drive
Ogdensburg, New York,
USA 13669
Tel: 1-800-267-4427 Fax: 1-800-263-4598

www.canarm.com/faromor
Subject to Change without notice.

agsales@canarm.ca
Printed in Canada



HOW IT WORKS

The transparent wall vent is made from an extruded aluminum frame and clear acrylic that allows for full natural light and ensures a long life span. These vents offer the same high light transmission as our ClearVu panels and are chosen for wall areas that may be interrupted with structural frame, doorways, etc.

FEATURES

- Made from an extruded aluminum frame and clear acrylic.
- Available in custom sizes
- Available in custom hinge positions.
- Can be operated individually or in series with a variety of operating systems based on operator or animal movement on the inside of the building.
- Can be operated manually or by automatic power drives connected to a thermostat.
- Aluminum wall vents are pre-hinged with stainless steel hinges in a self-flashing outer frame.

INDUSTRIES

- Dairy
- Equine



CANARM LTD. - Corporate Office
PO Box 367 2157 Parkedale Ave.,
Brockville, ON
Canada K6V 5V6
Tel: (613) 342-5424 Fax: 1-800-263-4598

Arthur Manufacturing Facility
#7686 Concession 16, RR 4
Arthur, ON
Canada N0G 1A0
Tel: (519) 848-3910 Fax: (519) 848-3948

Montréal Warehouse
2555 Rue Bernard Lefebvre
Laval, QC
Canada H7C 0A5
Tel: (450) 655-2535 Fax: (450) 665-0910

CANARM LTD. - USA Warehouse
808 Commerce Park Drive
Ogdensburg, New York,
USA 13669
Tel: 1-800-267-4427 Fax: 1-800-263-4598



HOW IT WORKS

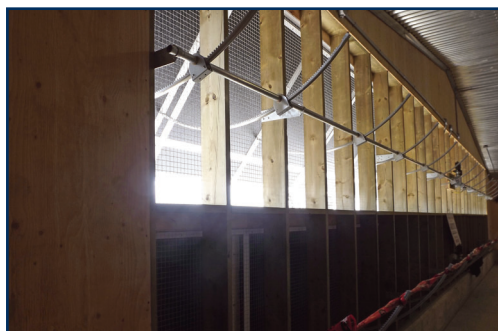
The hinged wall panel is a rigid insulated panel which has a top hinge design with a PVC cap that provides a continuous draft seal and excellent weather protection. Curved aluminum racks operate the panel and allow for maximum interior clearance while panel is operating.

FEATURES

- Top hinged solid insulated panel.
- Available with black interior liner for light restriction.
- Used typically as a tunnel ventilation inlet for poultry barns.
- Operate with rack and pinion system for tunnel ventilation intake.
- Can be operated manually by hand or automatically with new or existing control system.

INDUSTRIES

- Poultry



CANARM LTD. - Corporate Office
PO Box 367 2157 Parkedale Ave.,
Brockville, ON
Canada K6V 5V6
Tel: (613) 342-5424 Fax: 1-800-263-4598

Arthur Manufacturing Facility
#7686 Concession 16, RR 4
Arthur, ON
Canada N0G 1A0
Tel: (519) 848-3910 Fax: (519) 848-3948

Montréal Warehouse
2555 Rue Bernard Lefebvre
Laval, QC
Canada H7C 0A5
Tel: (450) 655-2535 Fax: (450) 665-0910

CANARM LTD. - USA Warehouse
808 Commerce Park Drive
Ogdensburg, New York,
USA 13669
Tel: 1-800-267-4427 Fax: 1-800-263-4598

www.canarm.com/faromor
Subject to Change without notice.

agsales@canarm.ca
Printed in Canada



HOW IT WORKS

Introducing Canarm – Faromor’s newest addition to its extensive line of ventilation products for the dairy industry, the ClearVu Hinged Panel System. This system is ideally suited for use as a fresh air intake for a tunnel ventilation system in a freestall dairy application. The top hinged design allows for maximum intake space on the end wall and when fully open, the panels also provide protection from rain penetration into the barn. When fully closed, the panels are tightly sealed, creating a draft free environment while providing full natural light in the colder months. The aluminum rack and pinion operating hardware allows for increased strength and extended life span. The electric drive unit can be operated by any one of Canarm – Faromor’s line of ventilation system controllers.

FEATURES

- Available in heights from 24” to 72”.
- Aluminum frame with clear acrylic inserts.
- Top hinged with rack and pinion operating hardware.
- Can be operated manually or by automatic power drives connected to a thermostat.
- All hardware is stainless steel, aluminum or galvanized for longer life expectancy.

INDUSTRIES

- Freestall Dairy



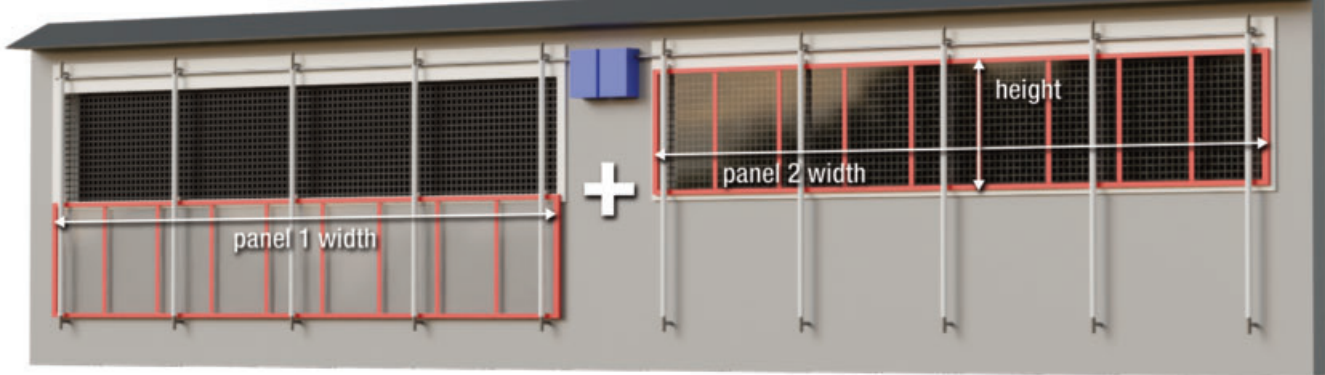
CANARM LTD. - Corporate Office
PO Box 367 2157 Parkedale Ave.,
Brockville, ON
Canada K6V 5V6
Tel: (613) 342-5424 Fax: 1-800-263-4598

Arthur Manufacturing Facility
#7686 Concession 16, RR 4
Arthur, ON
Canada N0G 1A0
Tel: (519) 848-3910 Fax: (519) 848-3948

Montréal Warehouse
2555 Rue Bernard Lefebvre
Laval, PC
Canada H7C 0A5
Tel: (450) 655-2535 Fax: (450) 665-0910

CANARM LTD. - USA Warehouse
808 Commerce Park Drive
Ogdensburg, New York,
USA 13669
Tel: 1-800-267-4427 Fax: 1-800-263-4598

CENTRE MOUNT DRIVE



END MOUNT DRIVE



CABLE DRIVE

Stainless steel cables and galvanized pulleys are used to lower and raise panels. Long life expectancy when maintained semi-annually and easy to replace parts.



PIPE DRIVE

A rotating steel pipe raises and lowers cables to operate the panels. This is a very robust system that will continue to operate if one of the cables breaks.

CLEARVU PANEL SYSTEM

Panel Height	2 ft (0.61m), 3 ft (0.91m), 4 ft (1.22m)			
Max Length	End Mount Drive		Centre Mount Drive	
	Manual	Auto	Manual	Auto
Cable Drive	56 ft (17m)	80 ft (24m)	NA	100 ft (30m)
Pipe Drive	80 ft (24m)	120 ft (36.5m)	NA	140 ft (43m)

Panel Height	5 ft (1.52m), 6 ft (1.83m)			
Max Length	End Mount Drive		Centre Mount Drive	
	Manual	Auto	Manual	Auto
Cable Drive	40 ft (12m)	56 ft (17m)	NA	96 ft (29m)
Pipe Drive	64 ft (19.5m)	100 ft (30m)	NA	128 ft (39m)

SOLARVU PANEL SYSTEM

Panel Height	2 ft (0.61m), 3 ft (0.91m), 4 ft (1.22m)			
Max Length	End Mount Drive		Centre Mount Drive	
	Manual	Auto	Manual	Auto
Cable Drive	80 ft (24m)	120 ft (36.5m)	NA	160 ft (49m)
Pipe Drive	120 ft (36.5m)	160 ft (49m)	NA	200 ft (61m)

Panel Height	5 ft (1.52m), 6 ft (1.83m)			
Max Length	End Mount Drive		Centre Mount Drive	
	Manual	Auto	Manual	Auto
Cable Drive	80 ft (24m)	100 ft (30m)	NA	140 ft (42.5m)
Pipe Drive	100 ft (30m)	120 ft (36.5m)	NA	180 ft (55m)

VIP PANEL SYSTEM

Panel Height	2 ft (0.61m), 3 ft (0.91m), 4 ft (1.22m)			
Max Length	End Mount Drive		Centre Mount Drive	
	Manual	Auto	Manual	Auto
Cable Drive	64 ft (19.5m)	80 ft (24m)	NA	120 ft (36.5m)
Pipe Drive	80 ft (24m)	120 ft (36.5m)	NA	160 ft (48.5m)

Note:

Centre mount drive max length combines the lengths of both panel sections.