



900-BI SERIES

Double Width, Double Inlet Backward Inclined Blowers

PERFORMANCE SPECIFICATIONS

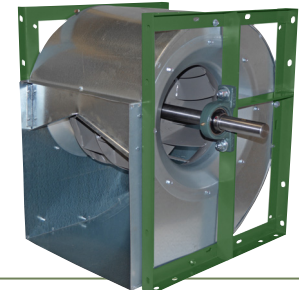
MODEL	TYPICAL MAXIMUM CFM @ SP					
	1" SP	2" SP	3" SP	4" SP	5" SP	MAX HP
910-BI*	3600	3500	3200	2800	2600	7.5
911-BI	6500	6000	5500	5100	4700	10
912-BI	8000	7750	7500	7000	6500	15
914-BI*	11000	10500	10000	9000	9000	20
916-BI	14000	13000	12500	12000	11500	20
918-BI*	16000	15500	14000	13500	12000	25
920-BI*	24000	23500	22000	21500	18000	40
922-BI	28000	27500	27000	26500	26000	50
925-BI*	35000	34500	34000	33000	32500	60
928-BI	46000	45500	42000	41500	3800	75
932-BI	50000	49500	49000	45000	44500	75
936-BI	65000	64500	64000	55000	54500	100

FEATURES

- Welded backwardly inclined blades.
- Corrosion resistant galvanized steel housing
- Heavy, welded steel "L" angle frames with "T-bar" bearing supports for 4 way mounting.
- Detachable inlet venturi.
- Shafts have corrosion inhibiting coating and are keywayed both ends.
- High quality cast iron pillow block bearings with grease fittings for lubrication.

*Regular Stock Size CFM values listed above are summarized for convenience.

ALL SHAFT ENDS ARE KEYWAYED
Power rating (BHP) does not include transmission losses. Performance certified is for installation type B: Free inlet, Ducted outlet. Performance ratings do not include the effect of appurtenances (accessories).

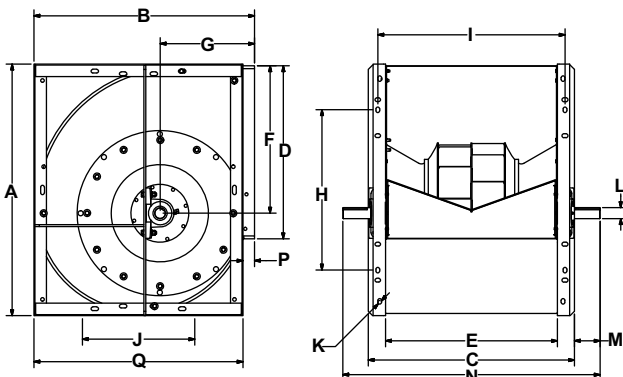


MULTIPLE DISCHARGE POSITION

DIMENSIONS

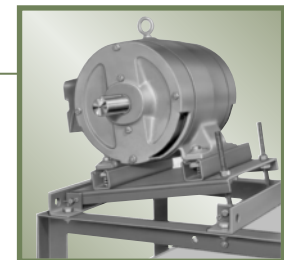
MODEL	OVERALL SIZE			OUTLET		WHEEL CENTER		MOUNTING			SHAFT DIM					WEIGHT (lbs) without motor	
	A	B	C	D	E	F	G	H	I	J	Dia K	Dia L	M	N	P		Q
910-BI*	18 3/8"	16 9/16"	16 1/16"	12 13/16"	12 5/8"	10 11/16"	7 11/16"	8 13/16"	13 7/8"	8 13/16"	7/16"	1"	3 11/16"	23 1/2"	1 5/16"	15 3/16"	64
911-BI	20 3/8"	18 3/8"	17 15/16"	14 3/16"	14 3/16"	11 7/8"	8 7/16"	11"	15 3/8"	11"	1/2"	1 3/16"	2 7/16"	22 3/4"	1 7/16"	16 7/8"	100
912-BI	22 3/4"	20 3/8"	19 1/8"	15 15/16"	15 15/16"	13 3/8"	9 5/16"	11"	17 1/16"	11"	1/2"	1 3/16"	2 11/16"	24 1/2"	1 1/2"	18 7/8"	110
914-BI*	25 15/16"	22 15/16"	22 3/16"	17 15/16"	17 13/16"	15 1/8"	10 1/4"	14"	19 7/16"	14"	7/16"	1 7/16"	4 7/8"	32"	1 5/16"	21 5/8"	117
916-BI	29"	25 5/8"	24 11/16"	19 15/16"	19 15/16"	17"	11 7/16"	14"	21 9/16"	14"	1/2"	1 7/16"	2 3/8"	29 1/2"	1 1/2"	24 1/8"	160
918-BI*	32 3/4"	28 11/16"	27 1/4"	22 1/2"	22 3/8"	19 1/4"	12 5/16"	20 7/8"	24 1/4"	20 7/8"	1/2"	1 1/2"	3 9/16"	34 1/2"	1 1/2"	27 3/16"	174
920-BI*	36 3/8"	31 11/16"	30 9/16"	25 1/4"	25 1/16"	21 1/4"	13 13/16"	20 7/8"	27 1/16"	20 7/8"	1/2"	1 1/2"	4 13/16"	40 1/4"	2"	29 11/16"	227
922-BI	40 9/16"	35 3/16"	34 3/8"	28 1/8"	28 1/8"	23 3/4"	15 3/8"	20 7/8"	30 1/8"	20 7/8"	1/2"	1 15/16"	3 15/16"	42 1/4"	2 1/8"	33"	400
925-BI*	45 1/2"	39 3/8"	31 1/2"	31 11/16"	31 1/2"	26 13/16"	16 15/16"	20 7/8"	33 1/4"	20 7/8"	1/2"	1 15/16"	4 3/8"	45 1/2"	2 1/4"	37 1/8"	365
928-BI	51 5/16"	44 1/8"	40 9/16"	35 3/8"	35 3/8"	30 1/8"	19 1/16"	24 13/16"	37 5/16"	24 13/16"	3/4"	1 15/16"	4 7/16"	49 1/2"	2 13/16"	41 5/16"	597
932-BI	57 13/16"	49 11/16"	39 3/4"	39 3/4"	39 3/4"	34"	21 1/4"	27 15/16"	41 5/8"	27 15/16"	1/2"	1 15/16"	4"	53 1/2"	3"	46 11/16"	661
936-BI	64 7/8"	55 7/16"	50 1/4"	44 1/2"	44 1/2"	38 1/4"	23 3/4"	31 1/2"	46 7/16"	31 1/2"	3/4"	2 7/16"	4 3/4"	59 3/4"	3 1/2"	51 15/16"	1061

*Regular stock size



OPTIONS

- 1 - 15 HP Motor Platform
- 20 - 50 HP Motor Platform



OPTIONAL 1 TO 15 HP MOTOR PLATFORM
(20 - 50 HP ALSO AVAILABLE)