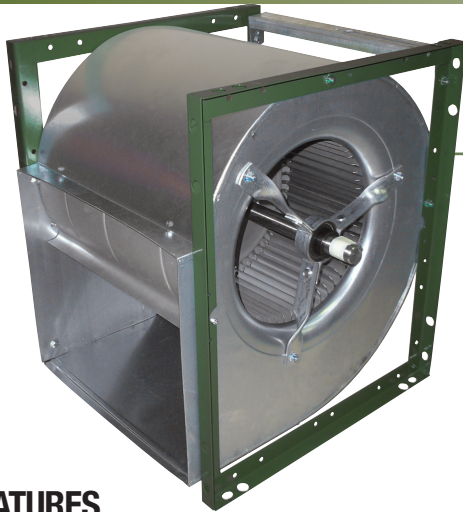


800 SERIES

Double Width, Double Inlet Blowers - with Frame



PERFORMANCE SPECIFICATIONS

MODEL	MAXIMUM CFM @ SP									
	1/2" SP		1" SP		1 1/2" SP		2" SP		2 1/2" SP	
	CFM	FEI	CFM	FEI	CFM	FEI	CFM	FEI	CFM	FEI
809	3700	0.71	3600	0.8	3400	0.9	3200	0.97	3000	1
810	4500	0.75	4200	0.78	3900	0.82	3600	0.86	3300	0.92
812	5400	1.53	5100	0.93	4800	1.04	4400	1.11	4000	1.14
815	6900	0.95	6400	1.07	5800	1.16	5200	1.24	4600	1.24
818	10700	0.94	9800	1.03	9000	1.11	8300	1.19	7500	1.24

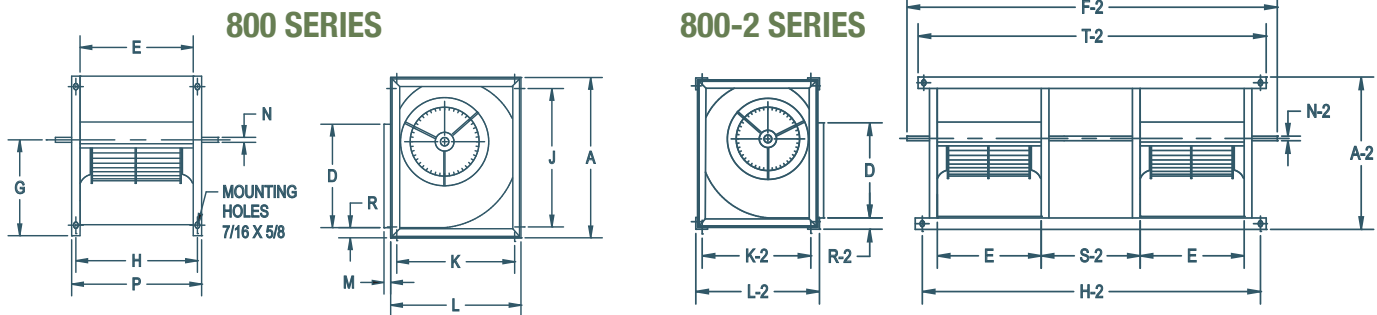
FOR FAN CURVES & FULL PERFORMANCE DATA, CONSULT OUR DELAIR SOFTWARE.
WWW.CANARM.COM/DELAIR

FEATURES

- Features frame with spider bearing bracket mounts.
- Available sizes: 9", 10", 12", 15" and 18" wheel diameters.
- Keywayed shaft both ends.
- Universal Frame allows for choice of discharge position.
- Motor mounting hardware supplied.
- Ball bearings are permanently lubricated.
- Corrosion resistant galvanized blower housing.
- Available as single or twin assemblies.
- Matte finish zinc coated steel Delhi 'G' series full width wheel and cut-off baffle.
- Frame has green baked enamel finish.
- Insert ball bearings with resilient rings.
- Bearing brackets are attached with thread cutting screws driven into extruded housing holes (809) or attached with a bolt and locknut (810 through 818).
- Motor mounting bracket is attached to the blower frames on models 809 through 815 and is rated at 3 HP.
- Motor mounting bracket/motor plate assembly for 818 and 818-2 models is rated at 5 HP.
- Motor mounting and adjusting hardware is packed with each unit.
- Two adjusting leg sets are furnished with 815 and 818 models, one only with all others.
- Units individually cartoned or skidded for shipment.



DIMENSIONS



800 SERIES

MODEL	A	D	E	G	H	J	K	L	M	N	P	R	WHEEL DIAMETER	WHEEL WIDTH	UNIT WEIGHT (LBS) (without motor & drives)
809	17 1/4"	10 1/4"	11 13/16"	10 1/8"	12 15/16"	14 1/2"	11 3/4"	14 1/2"	3/4"	3/4"	13 15/16"	1 1/2"	10 1/4"	9 9/16"	28
810	19 1/8"	11 3/8"	13 1/8"	11 1/4"	14 1/4"	16 1/2"	13 3/8"	16 1/4"	3/4"	3/4"	15 1/4"	1 1/2"	11 9/16"	10 13/16"	32
812	22 1/4"	13 7/16"	15 5/8"	13"	16 3/4"	19 5/8"	16 1/4"	19"	3/4"	1"	17 3/4"	1 1/2"	12 7/8"	12 13/16"	43
815	26"	15 7/8"	18 5/8"	15 1/4"	19 3/4"	23 3/8"	19 3/8"	22 1/8"	3/4"	1"	20 3/4"	1 1/2"	15 1/2"	15 1/16"	67
818	30 3/4"	18 7/8"	21 7/8"	17 3/4"	23 1/2"	29"	24 1/2"	26 1/2"	3/4"	1"	25"	1 1/2"	18 1/2"	18 1/2"	125

800-2 SERIES

MODEL	A-2	SHAFT LENGTH F-2	5/8 DIA. MOUNTING HOLES H-2	5/8 DIA. MOUNTING HOLES K-2	L-2	N-2	R-2	S-2	T-2	TWINNING ANGLE	WEIGHT (LBS) (without motor & drives)
809-2	17 5/8"	39 1/2"	36 5/8"	13 3/8"	14 7/8"	3/4"	1 11/16"	9"	38 3/8"	1 1/2 x 1 1/2 x 1/8	95
810-2	19 1/2"	44"	40 1/4"	15 1/8"	16 5/8"	3/4"	1 11/16"	10"	42"	1 1/2 x 1 1/2 x 1/8	112
812-2	22 5/8"	51 1/2"	47 1/4"	17 7/8"	19 3/8"	1"	1 11/16"	12"	49"	1 1/2 x 1 1/2 x 1/8	130
815-2	26 3/8"	61 3/8"	56 1/4"	21"	22 1/2"	1"	1 11/16"	15"	58"	1 1/2 x 1 1/2 x 1/8	195
818-2	31 1/8"	72"	66 3/4"	25 1/2"	27"	1"	1 3/4"	18"	68 1/2"	1 1/2 x 1 1/2 x 3/16	302