

700 SERIES

Filtered Fresh Air Supply Units



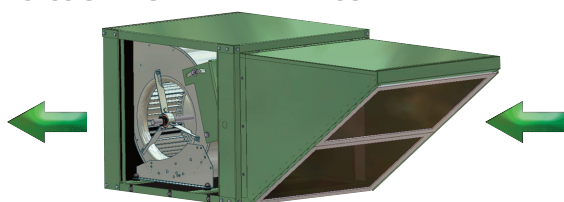
For use in restaurants, schools, high rise apartments and many other commercial and industrial applications.

FEATURES

- Green, weather resistant baked powder coat finish.
- Heavy duty ball bearings suitable for -65° to +250° F.
- Latched top cover provides convenient service access to 4 filters, motor and drive.
- Flexible forward curved belt drive blowers operate at low speed and noise levels.
- Blower is rubber mounted for quiet operation.
- Four permanent, washable, aluminum filters have large surface area for efficient filtration.
- Outside air flows over the motor to increase motor life.
- Top insulated with 1/2" fiberglass flexible duct liner.
- Adaptable to heating or cooling coils for applications requiring tempered air.
- Motor mounting hardware supplied with all units.

FOR HORIZONTAL APPLICATIONS

9200 SERIES WITH INTAKE HOOD

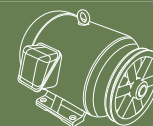


Use 9200 Series Duct Blower with matching "H" Series Intake Hood. Refer to 9200 series page.



Canarm certifies that the 700 Series shown herein are licensed to bear the AMCA Seal. The ratings shown are based on tests and procedures performed in accordance with AMCA Publications 211 & 311 and comply with the requirements of the AMCA Certified Ratings Programme.

The AMCA certified ratings seal applies to air and sound performance only. The 700 Series shown herein are not approved by AMCA for FEI ratings.

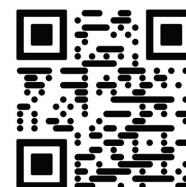


AVAILABLE WITH MOTORS & DRIVES FACTORY INSTALLED. CONSULT OUR DELAIR FAN SELECTION SOFTWARE FOR DETAILS.

PERFORMANCE SPECIFICATIONS

MODEL	TYPICAL MAXIMUM CFM @ SP											
	1/2" SP		1" SP		1 1/2" SP		2" SP		2 1/2" SP		Min HP	Max HP
	CFM	FEI	CFM	FEI	CFM	FEI	CFM	FEI	CFM	FEI		
709	2600	0.76	2500	0.91	2300	1.01	2100	1.04	1800	1.07	1/6	1 1/2
710	3100	0.81	2800	0.96	2500	1.04	2300	1.09	1900	1.07	1/6	1 1/2
712	4400	0.83	4000	0.95	3600	1.04	3100	1.09	2600	1.05	1/6	2
715	5700	0.72	5400	0.84	4700	0.88	4000	0.90	3400	0.90	1/6	3
718	8500	0.63	8000	0.76	7400	0.86	6700	0.93	5900	0.93	1/4	5

Power rating (BHP) does not include transmission losses. Performance certified is for installation type B: Free inlet, Ducted outlet. Performance ratings do not include the effect of appurtenances (accessories).



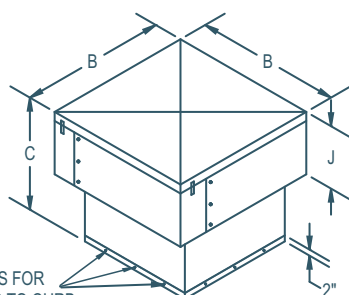
View FEI charts
canarm.com/fei-700

FOR FAN CURVES & FULL PERFORMANCE DATA, CONSULT OUR DELAIR SOFTWARE. WWW.CANARM.COM/DELAIR

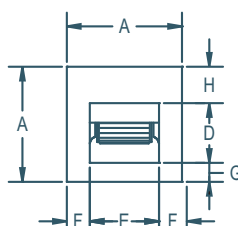
DIMENSIONS

MODEL	A	B	C	D	E	F	G	H	J	FILTERS		*INSIDE CABINET	UNIT WEIGHT (LBS) (without motor & drives)
										SIZE	QUANTITY		
709	24 3/8"	32 3/8"	24 3/8"	10 1/4"	11 13/16"	6 9/32"	7 1/16"	7 1/16"	10 1/4"	10"x 20"	4	24"x 24"	84
710	28 3/8"	38 1/2"	28 1/4"	11 3/8"	13 1/8"	7 5/8"	8 1/2"	8 1/2"	12 1/4"	12"x 24"	4	28"x 28"	108
712	32 3/8"	42 5/8"	31 3/8"	13 7/16"	15 5/8"	8 3/8"	9 15/32"	9 15/32"	16 1/2"	16"x 25"	4	32"x 32"	150
715	32 3/8"	42 5/8"	31 3/8"	15 7/8"	18 5/8"	6 7/8"	6 1/4"	10 1/4"	16 1/2"	16"x 25"	4	32"x 32"	155
718	36 3/8"	48 5/16"	37 1/4"	18 7/8"	21 7/8"	7 1/4"	6"	11 1/2"	20 3/4"	20"x 28 1/2"	4	36"x 36"	245

* Curb size to be smaller than inside cabinet to allow for flashing and roofing.



5/16" HOLES FOR FASTENING TO CURB



BOTTOM VIEW

MOTOR AND DRIVE COMPARTMENT WITH COVER REMOVED TO ILLUSTRATE 3 SIDE MOTOR ACCESS AND SLOPED MOTOR BASE FOR BELT TENSIONING.



ACCESSORIES

- Roof curbs (see page C27)