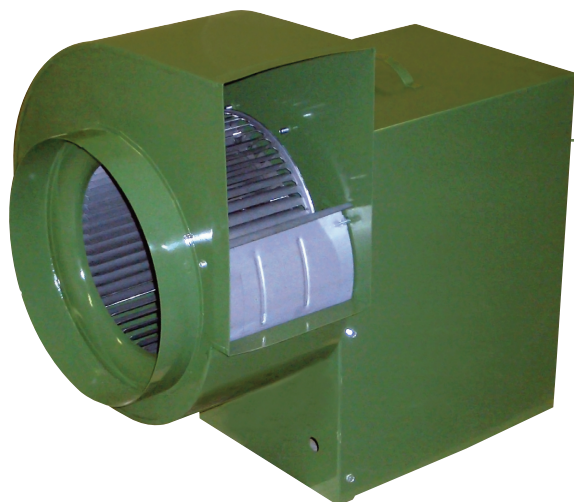


600 SERIES

FC Exhauster Belt Drive Utility Blower



FEATURES

- Standard, vented motor and drive compartment cover with handles for safety and weather protection.
- Sliding motor base for belt tension adjustment.
- Standard top horizontal discharge position can be easily rotated to any of 8 positions.
- Shafts for 620, 622 & 625 models are keywayed for wheels and pulleys (610 to 618 models for pulleys only).
- Outlet flanges on models 620, 622 & 625.
- Available in CW or CCW rotation.
- Keywayed shaft.
- Heavy duty pillow block ball bearings.

MOTOR AND DRIVE COMPARTMENT WITH COVER REMOVED TO ILLUSTRATE 3 SIDE MOTOR ACCESS AND SLOPED MOTOR BASE FOR BELT TENSIONING.



Canarm certifies that the 600 Series shown herein are licensed to bear the AMCA Seal. The ratings shown are based on tests and procedures performed in accordance with AMCA Publications 211 and comply with the requirements of the AMCA Certified Ratings Programme.

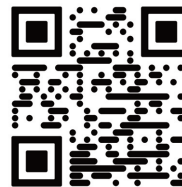
The AMCA certified ratings seal applies to air performance only. The 600 Series shown herein are not approved by AMCA for FEI ratings.

AVAILABLE WITH MOTORS & DRIVES FACTORY INSTALLED. CONSULT OUR DELAIR FAN SELECTION SOFTWARE FOR DETAILS.



SPECIFICATIONS

MODEL	TYPICAL MAXIMUM CFM @ SP										Min HP	Max HP
	1/2" SP		1" SP		1 1/2" SP		2" SP		2 1/2" SP			
	CFM	FEI	CFM	FEI	CFM	FEI	CFM	FEI	CFM	FEI		
610	2600	0.61	2400	0.72	2300	0.80	2200	0.88	2000	0.99	1/6	2
612	3000	0.70	2800	0.82	2700	0.90	2500	0.97	2300	1.06	1/3	2
615	6400	0.68	6000	0.75	5700	0.82	5400	0.89	5100	0.96	1/3	3
618	6700	0.60	6300	0.68	5900	0.77	5500	0.84	5200	0.91	1/2	5
620	10300	0.48	9900	0.57	9600	0.64	9200	0.73	8900	0.79	1/2	7 1/2
622	11500	0.49	11000	0.58	10400	0.67	10000	0.74	9400	0.81	1/2	7 1/2
625	14300	0.57	13500	0.68	12500	0.76	11900	0.84	11400	0.94	1	10



View FEI charts
canarm.com/fei-600

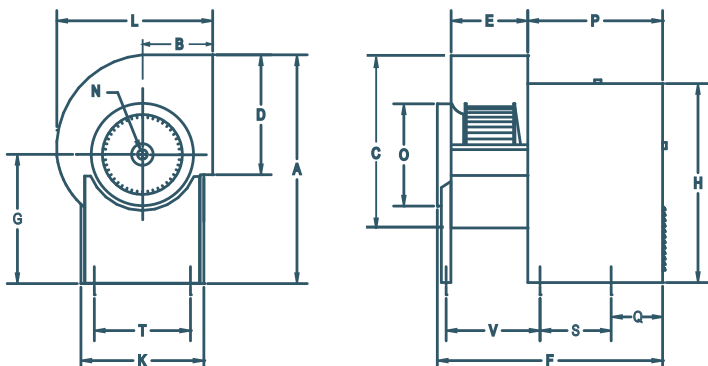
Power rating (BHP) does not include transmission losses. Performance certified is for installation type B: Free inlet, Ducted outlet. Performance ratings do not include the effect of appurtenances (accessories).

FOR FAN CURVES & FULL PERFORMANCE DATA, CONSULT OUR DELAIR SOFTWARE.

WWW.CANARM.COM/DELAIR

DIMENSIONS

MODEL	A	B	C	D	E	F	G	H	K	L	N	O	P	Q	S	T	V	WHEEL DIAMETER	WHEEL WIDTH	UNIT WEIGHT (LBS) (without motor)
610	24 13/16"	8"	17 7/16"	11 3/8"	9 3/16"	28 9/16"	15 1/16"	21 5/16"	13 3/16"	16 3/4"	3/4"	12"	17 1/4"	3 3/4"	11 3/4"	11 7/16"	--	11 1/8"	7 3/16"	57
612	26 9/16"	9 1/8"	20 1/4"	13 7/16"	9 3/16"	28 9/16"	15 1/16"	21 5/16"	13 3/16"	19 1/2"	3/4"	14"	17 1/4"	3 3/4"	11 3/4"	11 7/16"	--	12 7/8"	7 3/16"	60
615	36 3/4"	11 1/4"	28 1/16"	17"	12 1/2"	35 7/8"	20 1/16"	29 1/8"	16 9/16"	25 15/16"	1"	17"	21 1/8"	--	11 1/2"	14 11/16"	15 5/8"	15 1/2"	9 9/16"	124
618	36 5/16"	12 3/8"	28 7/8"	18 7/8"	14"	37 3/8"	20 1/16"	29 1/8"	16 9/16"	27"	1"	18"	21 1/8"	--	11 1/2"	14 11/16"	17 1/8"	18 1/2"	10 13/16"	144
620	48 9/16"	14 7/16"	35 3/4"	24 3/4"	15 3/4"	46 7/16"	28"	40 7/8"	25 1/4"	32 7/16"	1 3/16"	21"	27 11/16"	--	14 5/8"	22 1/2"	18 7/8"	20 7/16"	10 1/4"	278
622	50 9/16"	15 11/16"	39 3/8"	27 1/4"	17 1/8"	47 13/16"	28"	40 7/8"	25 1/4"	35 1/2"	1 3/16"	22 1/2"	27 11/16"	--	14 5/8"	22 1/2"	20 1/4"	22 1/8"	11 1/4"	296
625	53 11/16"	17 1/4"	44 3/8"	31 1/4"	19 5/8"	50 5/16"	28"	40 7/8"	25 1/4"	39 5/8"	1 3/16"	26 3/4"	27 11/16"	--	14 5/8"	22 1/2"	22 3/4"	25 1/4"	13"	329



ACCESSORIES

- Back Draft Dampers
- Inlet & Outlet Screens
- Corrosion Resistant Finishes
- Bolted Clean Out Door
- Heat Slinger
- 2" Drain Fitting
- Shaft Seal (vinyl or polyethylene)
- Vibration Isolation

For more information on available accessories, please see page C14.